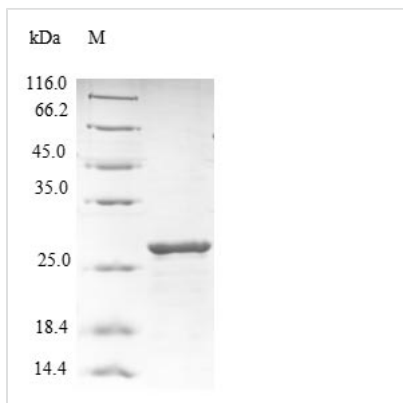




# Recombinant Human Reelin (RELN), partial

<b>Product Code</b>	CSB-YP019557HU
<b>Relevance</b>	Extracellular domain matrix serine protease that plays a role in layering of neurons in the cerebral cortex and cerebellum. Regulates microtubule function in neurons and neuronal migration. Affects migration of sympathetic preganglionic neurons in the spinal cord, where it seems to act as a barrier to neuronal migration. Enzymatic activity is important for the modulation of cell adhesion. Binding to the Extracellular domains of lipoprotein receptors VLDLR and LRP8/APOER2 induces tyrosine phosphorylation of DAB1 and modulation of TAU phosphorylation .
<b>Abbreviation</b>	Recombinant Human RELN protein, partial
<b>Storage</b>	The shelf life is related to many factors, storage state, buffer ingredients, storage temperature and the stability of the protein itself. Generally, the shelf life of liquid form is 6 months at -20°C/-80°C. The shelf life of lyophilized form is 12 months at -20°C/-80°C.
<b>Uniprot No.</b>	P78509
<b>Product Type</b>	Recombinant Protein
<b>Immunogen Species</b>	Homo sapiens (Human)
<b>Purity</b>	≥ 90% as determined by SDS-PAGE.
<b>Sequence</b>	AAGYYPRFSPFFFLCTHHGELEGDGEQGEVLISLHIAGNPTYYPGQEYHVTIS TSTFFDGLLVLTGLYTSTSVQASQSIGGSSAFGFGIMSDHQFGNQFMCSVVASH VSHLPTTNLSFIWIAPPAGTGCNVFMATATHRGQVIFKDALAQQQLCEQGAPTD VTVPHLAEIHSDSII LRDDFDSYHQLQLNPNIWVECNNCETGEQCGAIMHGNA VTFCEPYGPRELITT
<b>Research Area</b>	Cell Adhesion
<b>Source</b>	Yeast
<b>Target Names</b>	RELN
<b>Protein Names</b>	Recommended name: Reelin EC= 3.4.21.-
<b>Expression Region</b>	26-254aa
<b>Notes</b>	Repeated freezing and thawing is not recommended. Store working aliquots at 4°C for up to one week.
<b>Tag Info</b>	N-terminal 6xHis-tagged
<b>Mol. Weight</b>	26.9kDa
<b>Protein Length</b>	Partial
<b>Image</b>	



(Tris-Glycine gel) Discontinuous SDS-PAGE (reduced) with 5% enrichment gel and 15% separation gel.

### Reconstitution

We recommend that this vial be briefly centrifuged prior to opening to bring the contents to the bottom. Please reconstitute protein in deionized sterile water to a concentration of 0.1-1.0 mg/mL. We recommend to add 5-50% of glycerol (final concentration) and aliquot for long-term storage at -20°C/-80°C. Our default final concentration of glycerol is 50%. Customers could use it as reference.

### Shelf Life

The shelf life is related to many factors, storage state, buffer ingredients, storage temperature and the stability of the protein itself. Generally, the shelf life of liquid form is 6 months at -20°C/-80°C. The shelf life of lyophilized form is 12 months at -20°C/-80°C.