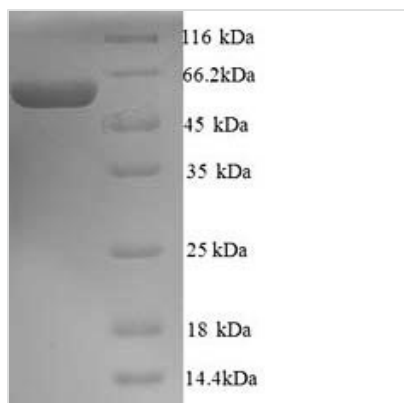


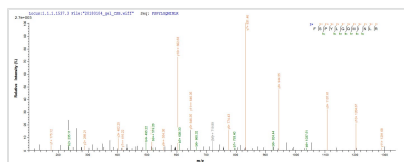


# Recombinant Human Melanoma antigen preferentially expressed in tumors (PRAME)

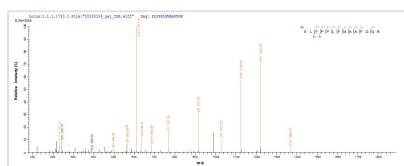
<b>Product Code</b>	CSB-YP018603HU
<b>Relevance</b>	Functions as a transcriptional repressor, inhibiting the signaling of retinoic acid through the retinoic acid receptors RARA, RARB and RARG. Prevents retinoic acid-induced cell proliferation arrest, differentiation and apoptosis.
<b>Abbreviation</b>	Recombinant Human PRAME protein
<b>Storage</b>	The shelf life is related to many factors, storage state, buffer ingredients, storage temperature and the stability of the protein itself. Generally, the shelf life of liquid form is 6 months at -20°C/-80°C. The shelf life of lyophilized form is 12 months at -20°C/-80°C.
<b>Uniprot No.</b>	P78395
<b>Alias</b>	Opa-interacting protein 4 ;OIP-4Preferentially expressed antigen of melanoma
<b>Product Type</b>	Recombinant Protein
<b>Immunogen Species</b>	Homo sapiens (Human)
<b>Purity</b>	Greater than 90% as determined by SDS-PAGE.
<b>Sequence</b>	MERRRLWGSIQSRYISMSVWTSPPRRLVELAGQSLLKDEALIAIAALELLPRELFP PLFMAAFDGRHSQTLKAMVQAWPFTCLPLGVLMKGGQHLHLETFKAVLDGLDV LLAQEVRPRRWKLQVLDLRKNSHQDFWTVWVSGNRSLSYFPEPEAAQPMTK KRKVDGLSTEAEQPFIPVEVLVDLFLKEGACDELFSYLIEKVKRKKNVLRLLCCK KLKIFAMPMQDIKMILKMVQLDSIEDLEVTCTWKLPTLAKFSPYLGQMINLRLL LSHIHASSYISPEKEEQYIAQFTSQFLSLQCLQALYVDSLFFLRGRLDQLLRHVM NPLETLSITNCRLSEGDVMHLSQSPSVLSVLSVLSGVMLTDVSPEPLQALLER ASATLQDLVFDECGITDDQLLALLPSLSHCSQLTTLSFYGNSISISALQSLLQHLL GLSNLTHVLYPVPLESYEDIHGTLHLERLAYLHARLRELLCELGRPSMVWLSAN PCPHCGDRTFYDPEPILCPCFMPN
<b>Research Area</b>	Apoptosis
<b>Source</b>	Yeast
<b>Target Names</b>	PRAME
<b>Protein Names</b>	Recommended name: Melanoma antigen preferentially expressed in tumors Alternative name(s): Opa-interacting protein 4 Short name= OIP-4 Preferentially expressed antigen of melanoma
<b>Expression Region</b>	1-509aa
<b>Notes</b>	Repeated freezing and thawing is not recommended. Store working aliquots at 4°C for up to one week.
<b>Tag Info</b>	N-terminal 6xHis-tagged
<b>Mol. Weight</b>	59.9kDa


**Protein Length**
**Full Length**
**Image**


(Tris-Glycine gel) Discontinuous SDS-PAGE (reduced) with 5% enrichment gel and 15% separation gel.



Based on the SEQUEST from database of Yeast host and target protein, the LC-MS/MS Analysis result of CSB-YP018603HU could indicate that this peptide derived from Yeast-expressed Homo sapiens (Human) PRAME.



Based on the SEQUEST from database of Yeast host and target protein, the LC-MS/MS Analysis result of CSB-YP018603HU could indicate that this peptide derived from Yeast-expressed Homo sapiens (Human) PRAME.

**Reconstitution**

We recommend that this vial be briefly centrifuged prior to opening to bring the contents to the bottom. Please reconstitute protein in deionized sterile water to a concentration of 0.1-1.0 mg/mL. We recommend to add 5-50% of glycerol (final concentration) and aliquot for long-term storage at -20°C/-80°C. Our default final concentration of glycerol is 50%. Customers could use it as reference.

**Shelf Life**

The shelf life is related to many factors, storage state, buffer ingredients, storage temperature and the stability of the protein itself. Generally, the shelf life of liquid form is 6 months at -20°C/-80°C. The shelf life of lyophilized form is 12 months at -20°C/-80°C.