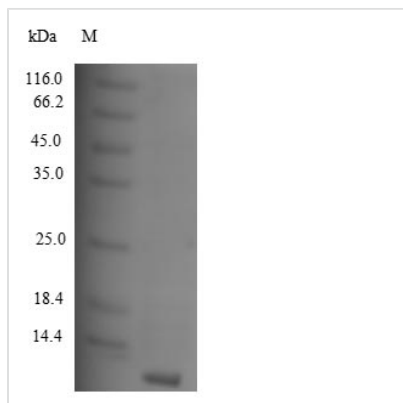




Recombinant Human C-C motif chemokine 8 (CCL8)

Product Code	CSB-YP004802HU
Relevance	Chotactic factor that attracts monocytes, lymphocytes, basophils and eosinophils. May play a role in neoplasia and inflammatory host responses. This protein can bind heparin. The processed form MCP-2(6-76) does not show monocyte chotactic activity, but inhibits the chotactic effect most predominantly of CCL7, and also of CCL2 and CCL5 and CCL8.
Abbreviation	Recombinant Human CCL8 protein
Storage	The shelf life is related to many factors, storage state, buffer ingredients, storage temperature and the stability of the protein itself. Generally, the shelf life of liquid form is 6 months at -20°C/-80°C. The shelf life of lyophilized form is 12 months at -20°C/-80°C.
Uniprot No.	P80075
Alias	HC14Monocyte chemoattractant protein 2Monocyte chemotactic protein 2 ;MCP-2Small-inducible cytokine A8
Product Type	Recombinant Protein
Immunogen Species	Homo sapiens (Human)
Purity	≥ 90% as determined by SDS-PAGE.
Sequence	QPDSVSIPITCCFNVINRKIPIQRLESYTRITNIQCPKEAVIFKTKRGKEVCADPK ERWVRDSMKHLDQIFQNLKP
Research Area	Immunology
Source	Yeast
Target Names	CCL8
Protein Names	Recommended name: C-C motif chemokine 8 Alternative name(s): HC14 Monocyte chemoattractant protein 2 Monocyte chemotactic protein 2 Short name= MCP-2 Small-inducible cytokine A8 Cleaved into the following chain: 1. MCP-2(6-7
Expression Region	24-99aa
Notes	Repeated freezing and thawing is not recommended. Store working aliquots at 4°C for up to one week.
Tag Info	N-terminal 6xHis-tagged
Mol. Weight	10.9kDa
Protein Length	Full Length of Mature Protein
Image	



(Tris-Glycine gel) Discontinuous SDS-PAGE (reduced) with 5% enrichment gel and 15% separation gel.

Reconstitution

We recommend that this vial be briefly centrifuged prior to opening to bring the contents to the bottom. Please reconstitute protein in deionized sterile water to a concentration of 0.1-1.0 mg/mL. We recommend to add 5-50% of glycerol (final concentration) and aliquot for long-term storage at -20°C/-80°C. Our default final concentration of glycerol is 50%. Customers could use it as reference.

Shelf Life

The shelf life is related to many factors, storage state, buffer ingredients, storage temperature and the stability of the protein itself. Generally, the shelf life of liquid form is 6 months at -20°C/-80°C. The shelf life of lyophilized form is 12 months at -20°C/-80°C.