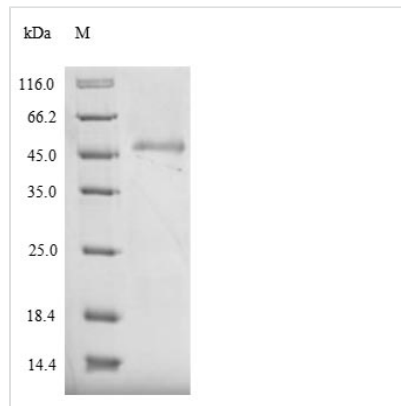




Recombinant Pig E-selectin (SELE), partial

Product Code	CSB-YP020975PI
Relevance	Cell-surface glycoprotein having a role in immunoadhesion. Mediates in the adhesion of blood neutrophils in cytokine-activated endothelium through interaction with PSGL1/SELPLG. May have a role in capillary morphogenesis.
Abbreviation	Recombinant Pig SELE protein, partial
Storage	The shelf life is related to many factors, storage state, buffer ingredients, storage temperature and the stability of the protein itself. Generally, the shelf life of liquid form is 6 months at -20°C/-80°C. The shelf life of lyophilized form is 12 months at -20°C/-80°C.
Uniprot No.	P98110
Alias	CD62 antigen-like family member E Endothelial leukocyte adhesion molecule 1 ;ELAM-1 Leukocyte-endothelial cell adhesion molecule 2 ;LECAM2;; CD62E
Product Type	Recombinant Protein
Immunogen Species	Sus scrofa (Pig)
Purity	≥ 90% as determined by SDS-PAGE.
Sequence	WSYSASTETMTFDDASAYCQQRYPYTHLVAIQNHAEIEYLNSTFNYSASYWIGIR KINGTWTWIGTKKALTPEATNWAPGEPNNKQSNEDCVEIYIKRDKDSGKWND ERCSKKKLALCYTAACTPTSCSGHGECIETINSSTCQCYPGFRGLQCEQVVEC DALENPVNGVVTCPQSLPWNTTCAFECKEGFELIGPEHLQCTSSGSWDGKPK TCKAVTCDTVGHPQNGDVSCNHSSIGEFAYKSTCHFTCAEGFGLQGPAQIEC TAQQQWTQQAPVCKAVKCPAVSQPKNGLVKFTHSPTGEFTYKSSCAFSCEE GFELRGSACLACTSQGQWTQEVPSQVQVQCSSLEVPREINMSCSGEPVFGA VCTFACPEGWMLNGSVALTCGATGHWSGMLPTCEAPAESKIP
Research Area	Others
Source	Yeast
Target Names	SELE
Protein Names	Recommended name: E-selectin Alternative name(s): CD62 antigen-like family member E Endothelial leukocyte adhesion molecule 1 Short name= ELAM-1 Leukocyte-endothelial cell adhesion molecule 2 Short name= LECAM2 CD_antigen
Expression Region	23-429aa
Notes	Repeated freezing and thawing is not recommended. Store working aliquots at 4°C for up to one week.
Tag Info	N-terminal 6xHis-tagged
Mol. Weight	46.3kDa
Protein Length	Extracellular Domain
Image	



(Tris-Glycine gel) Discontinuous SDS-PAGE (reduced) with 5% enrichment gel and 15% separation gel.

Reconstitution

We recommend that this vial be briefly centrifuged prior to opening to bring the contents to the bottom. Please reconstitute protein in deionized sterile water to a concentration of 0.1-1.0 mg/mL. We recommend to add 5-50% of glycerol (final concentration) and aliquot for long-term storage at -20°C/-80°C. Our default final concentration of glycerol is 50%. Customers could use it as reference.

Shelf Life

The shelf life is related to many factors, storage state, buffer ingredients, storage temperature and the stability of the protein itself. Generally, the shelf life of liquid form is 6 months at -20°C/-80°C. The shelf life of lyophilized form is 12 months at -20°C/-80°C.