

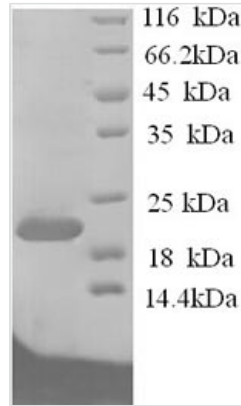


# Recombinant Rat Ephrin-A1 (Efna1)

<b>Product Code</b>	CSB-YP007460RA
<b>Relevance</b>	Cell surface GPI-bound ligand for Eph receptors, a family of receptor tyrosine kinases which are crucial for migration, repulsion and adhesion during neuronal, vascular and epithelial development. Binds promiscuously Eph receptors residing on adjacent cells, leading to contact-dependent bidirectional signaling into neighboring cells. Plays an important role in angiogenesis and tumor neovascularization. The recruitment of VAV2, VAV3 and PI3-kinase p85 subunit by phosphorylated EPHA2 is critical for EFNA1-induced RAC1 GTPase activation and vascular endothelial cell migration and assembly. Exerts anti-oncogenic effects in tumor cells through activation and down-regulation of EPHA2. Activates EPHA2 by inducing tyrosine phosphorylation which leads to its internalization and degradation. Acts as a negative regulator in the tumorigenesis of gliomas by down-regulating EPHA2 and FAK. Can evoke collapse of embryonic neuronal growth cone and regulates dendritic spine morphogenesis .
<b>Abbreviation</b>	Recombinant Rat Efna1 protein
<b>Storage</b>	The shelf life is related to many factors, storage state, buffer ingredients, storage temperature and the stability of the protein itself. Generally, the shelf life of liquid form is 6 months at -20°C/-80°C. The shelf life of lyophilized form is 12 months at -20°C/-80°C.
<b>Uniprot No.</b>	P97553
<b>Alias</b>	EPH-related receptor tyrosine kinase ligand 1 ;LERK-1 Immediate early response protein B61
<b>Product Type</b>	Recombinant Protein
<b>Immunogen Species</b>	Rattus norvegicus (Rat)
<b>Purity</b>	≥ 90% as determined by SDS-PAGE.
<b>Sequence</b>	ADRHIVFWNSSNPKFREEDYTVHVQLNDYLDIICPHYEDDSVADAAMERYTLY MVEHQEYVTCEPQSKDQVRWKCQNQPSAKHGPEKLSEKFQRFTPFTLGKEFK EGHSYYYISKPIYHQETQCLKLVTVNGKITHSPHAHANPQEKRLQADDPEVQ VLHSIGHS
<b>Research Area</b>	Others
<b>Source</b>	Yeast
<b>Target Names</b>	Efna1
<b>Protein Names</b>	Recommended name: Ephrin-A1 Alternative name(s): EPH-related receptor tyrosine kinase ligand 1 Short name= LERK-1 Immediate early response protein B61 Cleaved into the following chain: 1. Ephrin-A1, secreted form
<b>Expression Region</b>	18-182aa
<b>Notes</b>	Repeated freezing and thawing is not recommended. Store working aliquots at 4°C for up to one week.



<b>Tag Info</b>	N-terminal 6xHis-tagged
<b>Mol. Weight</b>	21.4kDa
<b>Protein Length</b>	Full Length of Mature Protein

**Image**

(Tris-Glycine gel) Discontinuous SDS-PAGE (reduced) with 5% enrichment gel and 15% separation gel.

**Reconstitution**

We recommend that this vial be briefly centrifuged prior to opening to bring the contents to the bottom. Please reconstitute protein in deionized sterile water to a concentration of 0.1-1.0 mg/mL. We recommend to add 5-50% of glycerol (final concentration) and aliquot for long-term storage at -20°C/-80°C. Our default final concentration of glycerol is 50%. Customers could use it as reference.

**Shelf Life**

The shelf life is related to many factors, storage state, buffer ingredients, storage temperature and the stability of the protein itself.

Generally, the shelf life of liquid form is 6 months at -20°C/-80°C. The shelf life of lyophilized form is 12 months at -20°C/-80°C.