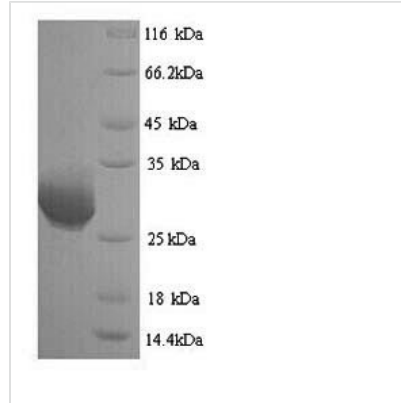




Recombinant Human Granzyme B (GZMB)

Product Code	CSB-YP010082HU
Relevance	This enzyme is necessary for target cell lysis in cell-mediated immune responses. It cleaves after Asp. Seems to be linked to an activation cascade of caspases (aspartate-specific cysteine proteases) responsible for apoptosis execution. Cleaves caspase-3, -7, -9 and 10 to give rise to active enzymes mediating apoptosis.
Abbreviation	Recombinant Human GZMB protein
Storage	The shelf life is related to many factors, storage state, buffer ingredients, storage temperature and the stability of the protein itself. Generally, the shelf life of liquid form is 6 months at -20°C/-80°C. The shelf life of lyophilized form is 12 months at -20°C/-80°C.
Uniprot No.	P10144
Alias	C11CTLA-1 Cathepsin G-like 1 ; CTSL1 Cytotoxic T-lymphocyte proteinase 2 ; Lymphocyte protease Fragmentin-2 Granzyme-2 Human lymphocyte protein ; HLPSECTT-cell serine protease 1-3E
Product Type	Recombinant Protein
Immunogen Species	Homo sapiens (Human)
Purity	Greater than 90% as determined by SDS-PAGE.
Sequence	IIGGHEAKPHSRPYMAYLMIWDQKSLKRCGGFLIRDDFVLTAHHCWGSSINVTL GAHNIKEQEPTQQFIPVKRPIHPAYNPKNFSNDIMLLQLERKAKRTRAVQPLR LPSNKAQVKPGQTCSVAGWGQTAPLGKHSHTLQEVKMTVQEDRKCESDLRH YYDSTIELCVGDPEIKKTSFKGDSGGPLVCNKVAQGIVSYGRNNGMPRACTK VSSFVHWIKKTMKRY
Research Area	Immunology
Source	Yeast
Target Names	GZMB
Protein Names	Recommended name: Granzyme B EC= 3.4.21.79 Alternative name(s): C11 CTLA-1 Cathepsin G-like 1 Short name= CTSL1 Cytotoxic T-lymphocyte proteinase 2 Short name= Lymphocyte protease Fragmentin-2 Granzyme-2
Expression Region	21-247aa
Notes	Repeated freezing and thawing is not recommended. Store working aliquots at 4°C for up to one week.
Tag Info	N-terminal 6xHis-tagged
Mol. Weight	27.5kDa
Protein Length	Full Length of Mature Protein
Image	



(Tris-Glycine gel) Discontinuous SDS-PAGE (reduced) with 5% enrichment gel and 15% separation gel.

Reconstitution

We recommend that this vial be briefly centrifuged prior to opening to bring the contents to the bottom. Please reconstitute protein in deionized sterile water to a concentration of 0.1-1.0 mg/mL. We recommend to add 5-50% of glycerol (final concentration) and aliquot for long-term storage at -20°C/-80°C. Our default final concentration of glycerol is 50%. Customers could use it as reference.

Shelf Life

The shelf life is related to many factors, storage state, buffer ingredients, storage temperature and the stability of the protein itself. Generally, the shelf life of liquid form is 6 months at -20°C/-80°C. The shelf life of lyophilized form is 12 months at -20°C/-80°C.