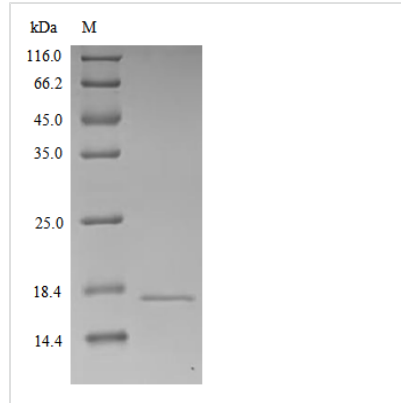


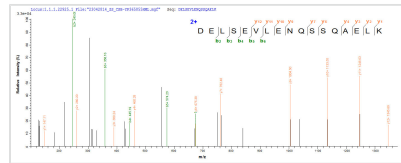


Recombinant Human Chromogranin-A (CHGA)

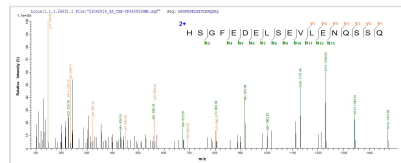
Product Code	CSB-YP005344HU
Relevance	Pancreastatin: Strongly inhibits glucose induced insulin release from the pancreas. Catestatin: Inhibits catecholamine release from chromaffin cells and noradrenergic neurons by acting as a non-competitive nicotinic cholinergic antagonist. Displays antibacterial activity against Gram-positive bacteria <i>S.aureus</i> and <i>M.luteus</i> , and Gram-negative bacteria <i>E.coli</i> and <i>P.aeruginosa</i> . Can induce mast cell migration, degranulation and production of cytokines and chemokines. Acts as a potent scavenger of free radicals in vitro. May play a role in the regulation of cardiac function and blood pressure.
Abbreviation	Recombinant Human CHGA protein
Storage	The shelf life is related to many factors, storage state, buffer ingredients, storage temperature and the stability of the protein itself. Generally, the shelf life of liquid form is 6 months at -20°C/-80°C. The shelf life of lyophilized form is 12 months at -20°C/-80°C.
Uniprot No.	P10645
Product Type	Recombinant Proteins
Immunogen Species	Homo sapiens (Human)
Purity	Greater than 90% as determined by SDS-PAGE.
Sequence	LPVNSPMNKGDTEVMKCIVEVISDTLSKPSMPVVSQECFETLRGDERILSILRH QNLKELQDLALQGAKERAHQKKHSGFEDELSEVLENQSSQAELEAVEEP SSKDVMKREDSKEAEKSGEATDGARPQALPEPMQESKAEGNNQAPGEEEE EEEEATNTHPPASLPSQKYPGPQAEGDSEGLSQGLVDREKGLSAEPGWQAK REEEEEEEEEAEAGEEAVPEEEGPTVVLNPHPSLGYKEIRKGESRSEALAVDG AGKPGAEAAQDPEGKGEQEHSQQKEEEEEEMAVVPQGLFRGGKSGELEQEE ERLSKEWEDSKRWSKMDQLAKELTAEKRLEGQEEEEEDNRDSSMKLSFRARA YGFRGPGPQLRRGWRPSSREDSLEAGLPLQVRGYPEEKKEEEGSANRRPED QELESLSAIEAELEKVAHQQLALRRG
Research Area	Cancer
Source	Yeast
Target Names	CHGA
Protein Names	Recommended name: Chromogranin-A Short name= CgAA Alternative name(s): Pituitary secretory protein I Short name= SP-ICleaved into the following 13 chains: 1. Vasostatin-1 Alternative name(s): Vasostatin I Vasostatin-2Alt
Expression Region	19-457aa
Notes	Repeated freezing and thawing is not recommended. Store working aliquots at 4°C for up to one week.
Tag Info	N-terminal 6xHis-tagged
Mol. Weight	50.9kDa


Protein Length
Full Length of Mature Protein
Image


(Tris-Glycine gel) Discontinuous SDS-PAGE (reduced) with 5% enrichment gel and 15% separation gel.



Based on the SEQUEST from database of Mammalian Cell host and target protein, the LC-MS/MS Analysis result of CSB-YP005344HU could indicate that this peptide derived from Yeast-expressed Homo sapiens (Human) CHGA.



Based on the SEQUEST from database of Mammalian Cell host and target protein, the LC-MS/MS Analysis result of CSB-YP005344HU could indicate that this peptide derived from Yeast-expressed Homo sapiens (Human) CHGA.

Shelf Life

The shelf life is related to many factors, storage state, buffer ingredients, storage temperature and the stability of the protein itself.

Generally, the shelf life of liquid form is 6 months at -20°C/-80°C. The shelf life of lyophilized form is 12 months at -20°C/-80°C.