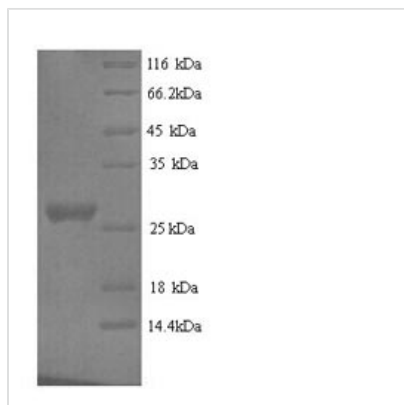


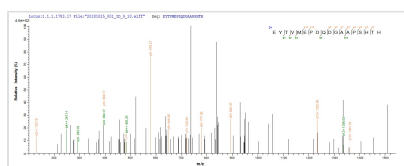


Recombinant Mouse Nidogen-1 (Nid1), partial

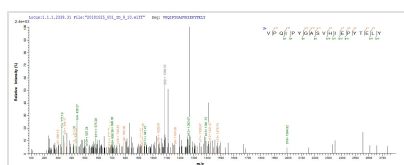
Product Code	CSB-YP015802MO
Relevance	Sulfated glycoprotein widely distributed in basent mbranes and tightly associated with laminin. Also binds to collagen IV and perlecan. It probably has a role in cell-Extracellular domain matrix interactions.
Abbreviation	Recombinant Mouse Nid1 protein, partial
Storage	The shelf life is related to many factors, storage state, buffer ingredients, storage temperature and the stability of the protein itself. Generally, the shelf life of liquid form is 6 months at -20°C/-80°C. The shelf life of lyophilized form is 12 months at -20°C/-80°C.
Uniprot No.	P10493
Alias	Entactin
Product Type	Recombinant Protein
Immunogen Species	Mus musculus (Mouse)
Purity	Greater than 90% as determined by SDS-PAGE.
Sequence	SPQRVNGKVKGRIFVGSSQVPVVFENTDLHSYVVMNHGRSYTAISTIPETVGY SLLPLAPIGGIIGWMFAVEQDGFKNFSGITGGEFTRQAEVTFLGHPGKLVKQQ FSGIDEHGHLTISTELEGRVPQIPYGASVHIEPYTELYHYSSSVITSSSTREYTV MEPDQDGAAPSHTHIQWRQTITFQECAHDDARPALPSTQQQLSVDVSVFLYN KEERILRYALSNSIGPVRDGPDA
Research Area	Others
Source	Yeast
Target Names	Nid1
Protein Names	Recommended name: Nidogen-1 Short name= NID-1 Alternative name(s): Entactin
Expression Region	428-665aa
Notes	Repeated freezing and thawing is not recommended. Store working aliquots at 4°C for up to one week.
Tag Info	N-terminal 6xHis-tagged
Mol. Weight	28.3kDa
Protein Length	Partial
Image	



(Tris-Glycine gel) Discontinuous SDS-PAGE (reduced) with 5% enrichment gel and 15% separation gel.



Based on the SEQUEST from database of Yeast host and target protein, the LC-MS/MS Analysis result of CSB-YP015802MO could indicate that this peptide derived from Yeast-expressed Mus musculus (Mouse) Nid1.



Based on the SEQUEST from database of Yeast host and target protein, the LC-MS/MS Analysis result of CSB-YP015802MO could indicate that this peptide derived from Yeast-expressed Mus musculus (Mouse) Nid1.

Reconstitution

We recommend that this vial be briefly centrifuged prior to opening to bring the contents to the bottom. Please reconstitute protein in deionized sterile water to a concentration of 0.1-1.0 mg/mL. We recommend to add 5-50% of glycerol (final concentration) and aliquot for long-term storage at -20°C/-80°C. Our default final concentration of glycerol is 50%. Customers could use it as reference.

Shelf Life

The shelf life is related to many factors, storage state, buffer ingredients, storage temperature and the stability of the protein itself. Generally, the shelf life of liquid form is 6 months at -20°C/-80°C. The shelf life of lyophilized form is 12 months at -20°C/-80°C.