



# Recombinant Human Atrial natriuretic peptide receptor 1 (NPR1), partial

<b>Product Code</b>	CSB-YP016023HU
<b>Relevance</b>	Receptor for the atrial natriuretic peptide NPPA/ANP and the brain natriuretic peptide NPPB/BNP which are potent vasoactive hormones playing a key role in cardiovascular homeostasis. Has guanylate cyclase activity upon binding of the ligand.
<b>Abbreviation</b>	Recombinant Human NPR1 protein, partial
<b>Storage</b>	The shelf life is related to many factors, storage state, buffer ingredients, storage temperature and the stability of the protein itself. Generally, the shelf life of liquid form is 6 months at -20°C/-80°C. The shelf life of lyophilized form is 12 months at -20°C/-80°C.
<b>Uniprot No.</b>	P16066
<b>Alias</b>	Atrial natriuretic peptide receptor type A ;ANP-A ;ANPR-A ;NPR-AGuanylate cyclase A ;GC-A
<b>Product Type</b>	Recombinant Protein
<b>Immunogen Species</b>	Homo sapiens (Human)
<b>Purity</b>	≥ 90% as determined by SDS-PAGE.
<b>Sequence</b>	GNLTVAVVLPANTSYPWSWARVGPVELALAQVKARPDLLPGWTVRTVLGS SENALGVCSDTAAPLAAVDLKWEHNPVFLGPGCVYAAPVGRFTAHWVPL LTAGAPALGFGVKDEYALTTTRAGPSYAKLGDFVAALHRRLGWERQALMLYAY RPGDEEHCFLLVEGLFMRVRDRLNITVDHLEFAEDDLSHYTRLLRRTMPRKGRV IYICSSPDAFRTLMLLALEAGLCGEDYVFFHLDIFGQSLQGGQGPAPRRPWER GDGQDVSARQAFQAAKIITYKDPDNPEYLEFLKQLKHLAYEQFNFTMEDGLVN TIPASFHDGLLLYIQAVTETLAHGGTVTDGENITQRMWNRSFQGVGTGYLKIDSS GDRETFSLWMDPENGAFRVVLNYNGTSQELVAVSGRKLNWPLGYPPPDP KCGFDNEDPACNQDHLSTLE
<b>Research Area</b>	Cardiovascular
<b>Source</b>	Yeast
<b>Target Names</b>	NPR1
<b>Protein Names</b>	Recommended name: Atrial natriuretic peptide receptor 1 EC= 4.6.1.2 Alternative name(s): Atrial natriuretic peptide receptor type A Short name= ANP-A Short name= ANPR-A Short name= NPR-A Guanylate cyclase A Short name=
<b>Expression Region</b>	33-473aa
<b>Notes</b>	Repeated freezing and thawing is not recommended. Store working aliquots at 4°C for up to one week.
<b>Tag Info</b>	N-terminal 6xHis-tagged



---

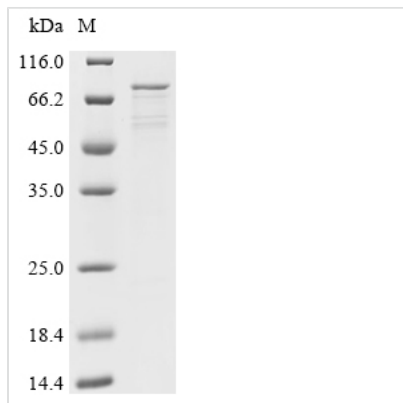
**Mol. Weight** 50.4kDa

---

**Protein Length** Partial

---

**Image**



(Tris-Glycine gel) Discontinuous SDS-PAGE (reduced) with 5% enrichment gel and 15% separation gel.

---

**Reconstitution**

We recommend that this vial be briefly centrifuged prior to opening to bring the contents to the bottom. Please reconstitute protein in deionized sterile water to a concentration of 0.1-1.0 mg/mL. We recommend to add 5-50% of glycerol (final concentration) and aliquot for long-term storage at -20°C/-80°C. Our default final concentration of glycerol is 50%. Customers could use it as reference.

---

**Shelf Life**

The shelf life is related to many factors, storage state, buffer ingredients, storage temperature and the stability of the protein itself. Generally, the shelf life of liquid form is 6 months at -20°C/-80°C. The shelf life of lyophilized form is 12 months at -20°C/-80°C.