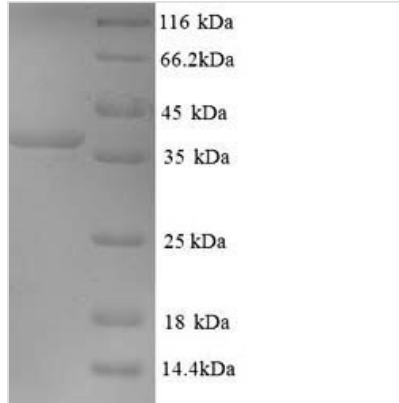




# Recombinant Mouse Microtubule-associated protein 2 (Map2), partial

<b>Product Code</b>	CSB-YP013408MO
<b>Relevance</b>	The exact function of MAP2 is unknown but MAPs may stabilize the microtubules against depolymerization. They also se to have a stiffening effect on microtubules.
<b>Abbreviation</b>	Recombinant Mouse Map2 protein, partial
<b>Storage</b>	The shelf life is related to many factors, storage state, buffer ingredients, storage temperature and the stability of the protein itself. Generally, the shelf life of liquid form is 6 months at -20°C/-80°C. The shelf life of lyophilized form is 12 months at -20°C/-80°C.
<b>Uniprot No.</b>	P20357
<b>Product Type</b>	Recombinant Protein
<b>Immunogen Species</b>	Mus musculus (Mouse)
<b>Purity</b>	≥ 90% as determined by SDS-PAGE.
<b>Sequence</b>	GMEGEKLPPVPFAQTFGTNLEDRKQSTEPSIVMPSIGLSAEPAPKEPKDWFIE EMPTESKKDEWGLAAPISPGPLTPMREKDVLEDIPRWEGKQFDSPMPSPFHG GSFTLPLDTMKNERVSEGPRPFAPVFFQSDDKVSLQDPSALATSKESSKDEEP LKDKADKVADVSISEVTLLGNVHSPVVEGYVGENISGEVKVTTDQEKKETSAP SVQEPTLTETEPQTKLDEKSTVSIEEAVAKKEESFKLRDDKTGVIQTSTEQSFS KEDQKGQEHTIDELKQDSFPISLEQAVTDAAMTSKTLGKVTSEPEAVSERREIQ GLFEEKTADKNKLEGAGSATIAEVEMP
<b>Research Area</b>	Others
<b>Source</b>	Yeast
<b>Target Names</b>	Map2
<b>Protein Names</b>	Recommended name: Microtubule-associated protein 2 Short name= MAP-2
<b>Expression Region</b>	213-559aa
<b>Notes</b>	Repeated freezing and thawing is not recommended. Store working aliquots at 4°C for up to one week.
<b>Tag Info</b>	N-terminal 6xHis-tagged
<b>Mol. Weight</b>	40.0kDa
<b>Protein Length</b>	Partial
<b>Image</b>	



(Tris-Glycine gel) Discontinuous SDS-PAGE (reduced) with 5% enrichment gel and 15% separation gel.

### Reconstitution

We recommend that this vial be briefly centrifuged prior to opening to bring the contents to the bottom. Please reconstitute protein in deionized sterile water to a concentration of 0.1-1.0 mg/mL. We recommend to add 5-50% of glycerol (final concentration) and aliquot for long-term storage at -20°C/-80°C. Our default final concentration of glycerol is 50%. Customers could use it as reference.

### Shelf Life

The shelf life is related to many factors, storage state, buffer ingredients, storage temperature and the stability of the protein itself. Generally, the shelf life of liquid form is 6 months at -20°C/-80°C. The shelf life of lyophilized form is 12 months at -20°C/-80°C.