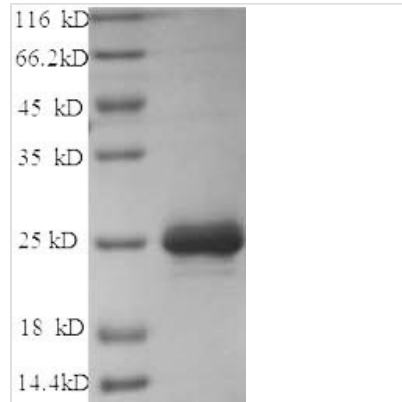




Recombinant Dog Chymase (CMA1)

Product Code	CSB-YP005599DO
Relevance	Major secreted protease of mast cells with suspected roles in vasoactive peptide generation, Extracellular domain matrix degradation, and regulation of gland secretion.
Abbreviation	Recombinant Dog CMA1 protein
Storage	The shelf life is related to many factors, storage state, buffer ingredients, storage temperature and the stability of the protein itself. Generally, the shelf life of liquid form is 6 months at -20°C/-80°C. The shelf life of lyophilized form is 12 months at -20°C/-80°C.
Uniprot No.	P21842
Alias	Alpha-chymase;Mast cell protease I
Product Type	Recombinant Protein
Immunogen Species	Canis lupus familiaris (Dog) (Canis familiaris)
Purity	≥ 90% as determined by SDS-PAGE.
Sequence	IIGGTESKPHSRPYMAHLEILTLRNHLASCGGFLIRRNFVLTAAHCAGRIFIMVTL GAHNIQKKEDTWQKLEVIKQFPHPKYDDLTLRHDIMLLKLKEKANLTLAVGTLP LSPQFNFVPPGRMCRVAGWGKRQVNGSGSDTLQEVLRLMDPQACRHYMA FDHNLQLCVGNPRKTKSAFKGDSGGPLLCAQVAQGIVSYGQNDKPPAVFTRI SHYRPWINKVLKQNKAK
Research Area	Others
Source	Yeast
Target Names	CMA1
Protein Names	Recommended name: Chymase EC= 3.4.21.39 Alternative name(s): Alpha-chymase Mast cell protease I
Expression Region	22-249aa
Notes	Repeated freezing and thawing is not recommended. Store working aliquots at 4°C for up to one week.
Tag Info	N-terminal 6xHis-tagged
Mol. Weight	27.5kDa
Protein Length	Full Length of Mature Protein
Image	



(Tris-Glycine gel) Discontinuous SDS-PAGE (reduced) with 5% enrichment gel and 15% separation gel.

Reconstitution

We recommend that this vial be briefly centrifuged prior to opening to bring the contents to the bottom. Please reconstitute protein in deionized sterile water to a concentration of 0.1-1.0 mg/mL. We recommend to add 5-50% of glycerol (final concentration) and aliquot for long-term storage at -20°C/-80°C. Our default final concentration of glycerol is 50%. Customers could use it as reference.

Shelf Life

The shelf life is related to many factors, storage state, buffer ingredients, storage temperature and the stability of the protein itself. Generally, the shelf life of liquid form is 6 months at -20°C/-80°C. The shelf life of lyophilized form is 12 months at -20°C/-80°C.