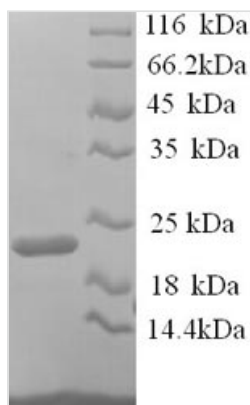




Recombinant Mouse Integrin alpha-L (Itgal), partial

Product Code	CSB-YP011875MO
Relevance	Integrin alpha-L/beta-2 is a receptor for ICAM1, ICAM2, ICAM3 and ICAM4. Is involved in a variety of immune phenomena including leukocyte-endothelial cell interaction, cytotoxic T-cell mediated killing, and antibody dependent killing by granulocytes and monocytes. Mice expressing a null mutation of the alpha-L subunit gene donstrate impaired tumor rejection and impaired leukocytes recruitment.
Abbreviation	Recombinant Mouse Itgal protein, partial
Storage	The shelf life is related to many factors, storage state, buffer ingredients, storage temperature and the stability of the protein itself. Generally, the shelf life of liquid form is 6 months at -20°C/-80°C. The shelf life of lyophilized form is 12 months at -20°C/-80°C.
Uniprot No.	P24063
Alias	CD11 antigen-like family member ALeukocyte adhesion glycoprotein LFA-1 alpha chain ;LFA-1ALeukocyte function-associated molecule 1 alpha chain;Lymphocyte antigen 15 ;Ly-15; CD11a
Product Type	Recombinant Protein
Immunogen Species	Mus musculus (Mouse)
Purity	≥ 90% as determined by SDS-PAGE.
Sequence	DLVFLFDGSQLDRKDFEKILEFMKDVMRKLSNTSYQFAAVQFSTDCRTEFTF LDYVKQNKNPVLLGSGVQPMFLLTNTFRAINYVVAHVFKKEESGARPDATKVLVI ITDGEASDKGNISAAHDITRYIIGIGKHFVSVQKQKTLHIFASEPVEEFVKILDTFE KLKDLFTDL
Research Area	Others
Source	Yeast
Target Names	Itgal
Protein Names	Recommended name: Integrin alpha-L Alternative name(s): CD11 antigen-like family member A Leukocyte adhesion glycoprotein LFA-1 alpha chain Short name= LFA-1A Leukocyte function-associated molecule 1 alpha chain Lymphocyte antig
Expression Region	153-325aa
Notes	Repeated freezing and thawing is not recommended. Store working aliquots at 4°C for up to one week.
Tag Info	N-terminal 6xHis-tagged
Mol. Weight	21.7kDa
Protein Length	Partial
Image	



(Tris-Glycine gel) Discontinuous SDS-PAGE (reduced) with 5% enrichment gel and 15% separation gel.

Reconstitution

We recommend that this vial be briefly centrifuged prior to opening to bring the contents to the bottom. Please reconstitute protein in deionized sterile water to a concentration of 0.1-1.0 mg/mL. We recommend to add 5-50% of glycerol (final concentration) and aliquot for long-term storage at -20°C/-80°C. Our default final concentration of glycerol is 50%. Customers could use it as reference.

Shelf Life

The shelf life is related to many factors, storage state, buffer ingredients, storage temperature and the stability of the protein itself. Generally, the shelf life of liquid form is 6 months at -20°C/-80°C. The shelf life of lyophilized form is 12 months at -20°C/-80°C.