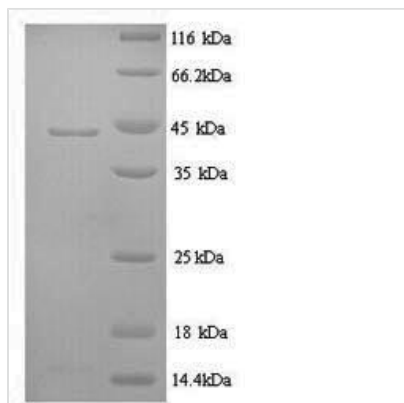




Recombinant Sheep Interleukin-6 (IL6)

Product Code	CSB-YP011664SH
Relevance	Cytokine with a wide variety of biological functions. It is a potent inducer of the acute phase response. Plays an essential role in the final differentiation of B-cells into Ig-secreting cells Involved in lymphocyte and monocyte differentiation. Acts on B-cells, T-cells, hepatocytes, hatopoietic progenitor cells and cells of the CNS. Required for the generation of T(H)17 cells. Also acts as a myokine. It is discharged into the bloodstream after muscle contraction and acts to increase the breakdown of fats and to improve insulin resistance. It induces myeloma and plasmacytoma growth and induces nerve cells differentiation .
Abbreviation	Recombinant Sheep IL6 protein
Storage	The shelf life is related to many factors, storage state, buffer ingredients, storage temperature and the stability of the protein itself. Generally, the shelf life of liquid form is 6 months at -20°C/-80°C. The shelf life of lyophilized form is 12 months at -20°C/-80°C.
Uniprot No.	P29455
Product Type	Recombinant Protein
Immunogen Species	Ovis aries (Sheep)
Purity	≥ 90% as determined by SDS-PAGE.
Sequence	GPLGEDFKNDTTPSRLLLLTTPEKTEALIKHIVDKISAIRKEICEKNDECENSKETL AENKLLKLPKMEEKDGCFCQSGFNQAICLIKTTAGLLEYQIYLDLQNEFEGNQET VMELQSSIRTLIQLKEKIAGLITTPATHHTDMLEKMQSSNEWVKNKVIIILRSLN FLQFSLRAIRMK
Research Area	Others
Source	Yeast
Target Names	IL6
Protein Names	Recommended name: Interleukin-6 Short name= IL-6
Expression Region	30-208aa
Notes	Repeated freezing and thawing is not recommended. Store working aliquots at 4°C for up to one week.
Tag Info	N-terminal 6xHis-tagged
Mol. Weight	22.5kDa
Protein Length	Full Length of Mature Protein
Image	



(Tris-Glycine gel) Discontinuous SDS-PAGE (reduced) with 5% enrichment gel and 15% separation gel.

Reconstitution

We recommend that this vial be briefly centrifuged prior to opening to bring the contents to the bottom. Please reconstitute protein in deionized sterile water to a concentration of 0.1-1.0 mg/mL. We recommend to add 5-50% of glycerol (final concentration) and aliquot for long-term storage at -20°C/-80°C. Our default final concentration of glycerol is 50%. Customers could use it as reference.

Shelf Life

The shelf life is related to many factors, storage state, buffer ingredients, storage temperature and the stability of the protein itself. Generally, the shelf life of liquid form is 6 months at -20°C/-80°C. The shelf life of lyophilized form is 12 months at -20°C/-80°C.