

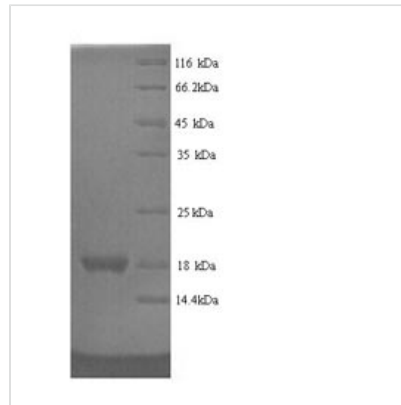


Recombinant Rat Regenerating islet-derived protein 3-gamma (Reg3g)

Product Code	CSB-YP019549RA
Relevance	Bactericidal C-type lectin which acts exclusively against Gram-positive bacteria and mediates bacterial killing by binding to surface-exposed carbohydrate moieties of peptidoglycan. Restricts bacterial colonization of the intestinal epithelial surface and consequently limits activation of adaptive immune responses by the microbiota. The uncleaved form has bacteriostatic activity, whereas the cleaved form has bactericidal activity against <i>L.monocytogenes</i> and methicillin-resistant <i>S.aureus</i> . Regulates keratinocyte proliferation and differentiation after skin injury .
Abbreviation	Recombinant Rat Reg3g protein
Storage	The shelf life is related to many factors, storage state, buffer ingredients, storage temperature and the stability of the protein itself. Generally, the shelf life of liquid form is 6 months at -20°C/-80°C. The shelf life of lyophilized form is 12 months at -20°C/-80°C.
Uniprot No.	P42854
Alias	Pancreatitis-associated protein 3Regenerating islet-derived protein III-gamma ;Reg III-gamma
Product Type	Recombinant Protein
Immunogen Species	<i>Rattus norvegicus</i> (Rat)
Purity	≥ 90% as determined by SDS-PAGE.
Sequence	EDAKEDVPTSRISCPKGSRAYGSYCYALFSVSKSWFDADLACQKRPSGHLVS VLSGSEASFVSSLIKSSGNSGQNVWIGLHDPTLGQEPNRGGWEWSNADVMN YFNWETNPSSVSGSHCGTLTRASGFLRWRENNCISELPYVCKFKA
Research Area	Others
Source	Yeast
Target Names	Reg3g
Protein Names	Recommended name: Regenerating islet-derived protein 3-gamma Short name= REG-3-gamma Alternative name(s): Pancreatitis-associated protein 3 Regenerating islet-derived protein III-gamma Short name= Reg III-gamma
Expression Region	27-174aa
Notes	Repeated freezing and thawing is not recommended. Store working aliquots at 4°C for up to one week.
Tag Info	N-terminal 6xHis-tagged
Mol. Weight	18.3kDa
Protein Length	Full Length of Mature Protein



Image



(Tris-Glycine gel) Discontinuous SDS-PAGE (reduced) with 5% enrichment gel and 15% separation gel.

Reconstitution

We recommend that this vial be briefly centrifuged prior to opening to bring the contents to the bottom. Please reconstitute protein in deionized sterile water to a concentration of 0.1-1.0 mg/mL. We recommend to add 5-50% of glycerol (final concentration) and aliquot for long-term storage at -20°C/-80°C. Our default final concentration of glycerol is 50%. Customers could use it as reference.

Shelf Life

The shelf life is related to many factors, storage state, buffer ingredients, storage temperature and the stability of the protein itself.

Generally, the shelf life of liquid form is 6 months at -20°C/-80°C. The shelf life of lyophilized form is 12 months at -20°C/-80°C.