



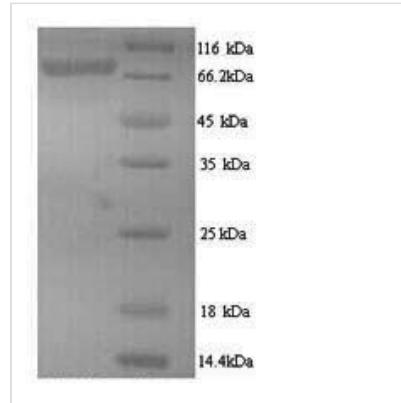
Recombinant Human Ribonucleoside-diphosphate reductase large subunit (RRM1)

Product Code	CSB-YP020518HU
Relevance	Provides the precursors necessary for DNA synthesis. Catalyzes the biosynthesis of deoxyribonucleotides from the corresponding ribonucleotides.
Abbreviation	Recombinant Human RRM1 protein
Storage	The shelf life is related to many factors, storage state, buffer ingredients, storage temperature and the stability of the protein itself. Generally, the shelf life of liquid form is 6 months at -20°C/-80°C. The shelf life of lyophilized form is 12 months at -20°C/-80°C.
Uniprot No.	P23921
Alias	Ribonucleoside-diphosphate reductase subunit M1 Ribonucleotide reductase large subunit
Product Type	Recombinant Protein
Immunogen Species	Homo sapiens (Human)
Purity	Greater than 90% as determined by SDS-PAGE.
Sequence	MHVIKRDGRQERVMFDKITSRIQKLCYGLNMDFVDPAQITMKVIQGLYSGVTTV ELDTLAAETAATLTTKHPDYAILAARIAVSNLHKETKKVFSDVMEDLYNYINPHN GKHSPMVAKSTLDIVLANKDRLNSAIIYDRDFSYNFYGFKTLERSYLLKINGKVA ERPQHMLMRVSVGIIHKEDIDAAIETYNLLSERWFTHASPTLFNAGTNRPQLSS CFLLSMKDDSIIEGIYDTLKQCALISKSAGGIGVAVSCIRATGSYIAGTNGNSNGL VPMLRVYNNNTARYVDQGGNKRPGAFAIYLEPWHLDFEFLDLKNTGKEEQRA RDLFFALWIPDLFMKRVETNQDWSLMCPNECPGLDEVWGEFEKLYASYEKQ GRVRKVVKAAQQLWYAIIESQTETGTPYMLYKDCSNRKSNNQNLGTIKCSNLCT EIVEYTSKDEVAVCNLASLALNMYVTSEHTYDFKLAEVTKVVRNLNKIIDINY YPVPEACLSNKRHRPIGIGVQGLADAFILMRYPFESAEAQLLNKQIFETIYYGAL EASCDLAKEQGPYETIEGSPVSKGILQYDMWNVTPDLDWDWKVLKEKIAKYGI RNSLLIAPMPTASTAQILGNNEIEPYTSNIYTRRVLSGEFQIVNPHLLKDLTER GLWHEEMKNQIIACNGSIQSIPEIPDDLKQLYKTVWEISQKTVLKMAAERGAFID QSQSLNIHIAEPNYGKLTSMHFYGWKQGLKTGMYYLRTRPAANPIQFTLNKEK LKDKKVSKEEEEEKERNTAAMVCSLENRDECLMCGS
Research Area	Epigenetics and Nuclear Signaling
Source	Yeast
Target Names	RRM1
Protein Names	Recommended name: Ribonucleoside-diphosphate reductase large subunit EC= 1.17.4.1 Alternative name(s): Ribonucleoside-diphosphate reductase subunit M1 Ribonucleotide reductase large subunit
Expression Region	1-792aa
Notes	Repeated freezing and thawing is not recommended. Store working aliquots at



4°C for up to one week.

Tag Info	N-terminal 6xHis-tagged
Mol. Weight	92.1kDa
Protein Length	Full Length

Image

(Tris-Glycine gel) Discontinuous SDS-PAGE (reduced) with 5% enrichment gel and 15% separation gel.

Reconstitution

We recommend that this vial be briefly centrifuged prior to opening to bring the contents to the bottom. Please reconstitute protein in deionized sterile water to a concentration of 0.1-1.0 mg/mL. We recommend to add 5-50% of glycerol (final concentration) and aliquot for long-term storage at -20°C/-80°C. Our default final concentration of glycerol is 50%. Customers could use it as reference.

Shelf Life

The shelf life is related to many factors, storage state, buffer ingredients, storage temperature and the stability of the protein itself. Generally, the shelf life of liquid form is 6 months at -20°C/-80°C. The shelf life of lyophilized form is 12 months at -20°C/-80°C.