



# Recombinant Human Alanine aminotransferase 1 (GPT)

<b>Product Code</b>	CSB-YP009864HU
<b>Relevance</b>	Catalyzes the reversible transamination between alanine and 2-oxoglutarate to form pyruvate and glutamate. Participates in cellular nitrogen metabolism and also in liver gluconeogenesis starting with precursors transported from skeletal muscles .
<b>Abbreviation</b>	Recombinant Human GPT protein
<b>Storage</b>	The shelf life is related to many factors, storage state, buffer ingredients, storage temperature and the stability of the protein itself. Generally, the shelf life of liquid form is 6 months at -20°C/-80°C. The shelf life of lyophilized form is 12 months at -20°C/-80°C.
<b>Uniprot No.</b>	P24298
<b>Alias</b>	Glutamate pyruvate transaminase 1 ;GPT 1;Glutamic--alanine transaminase 1;Glutamic--pyruvic transaminase 1
<b>Product Type</b>	Recombinant Protein
<b>Immunogen Species</b>	Homo sapiens (Human)
<b>Purity</b>	Greater than 95% as determined by SDS-PAGE. Greater than 95% as determined by SEC-HPLC.
<b>Sequence</b>	ASSTGDRSQAVRHGLRAKVLTLDGMNPRVRRVEYAVRGPIVQRALELEQELR QGVKKPFTEVIRANIGDAQAMGQRPITFLRQVLALCVNPDLLSSPNFPDDAKK RAERILQACGGHSLGAYSVSSGIQLIREDVARYIERRDGGIPADPNNVFLSTGA SDAIVTVLKLLVAGEGHTRTGVLIPQYPLYSATLAELGAVQVDYYLDEERAW ALDVAELHRALGQARDHCRPRALCVINPGNPTGQVQTRECIEAVIRFAFEERLF LLADEVYQDNVYAAGSQFHSFKKVLMMGPPYAGQQELASFHSTSKGYMGE CGFRGGYVEVVNMDAAVQQQMLKLMVRLCPPVPGQALLDLVVSPAPTDP SFAQFQAEKQAVLAELAAKAKLTEQVFNEAPGISCNPVQGAMYSFPRVQLPPR AVERAQELGLAPDMFFCLRLLEETGICVVPQSGFGQREGTYHFRMTILPPLEK LRLLEKLSRFHAKFTLEYS
<b>Research Area</b>	Metabolism
<b>Source</b>	Yeast
<b>Target Names</b>	GPT
<b>Protein Names</b>	Recommended name: Alanine aminotransferase 1 Short name= ALT1 EC= 2.6.1.2 Alternative name(s): Glutamate pyruvate transaminase 1 Short name= GPT 1 Glutamic--alanine transaminase 1 Glutamic--pyruvic transaminase 1
<b>Expression Region</b>	2-496aa
<b>Notes</b>	Repeated freezing and thawing is not recommended. Store working aliquots at 4°C for up to one week.

**Tag Info**

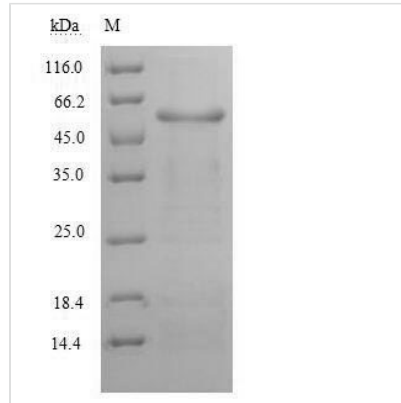
N-terminal 6xHis-tagged

**Mol. Weight**

56.5kDa

**Protein Length**

Full Length of Mature Protein

**Image**

(Tris-Glycine gel) Discontinuous SDS-PAGE (reduced) with 5% enrichment gel and 15% separation gel.



The purity of GPT was greater than 95% as determined by SEC-HPLC

**Reconstitution**

We recommend that this vial be briefly centrifuged prior to opening to bring the contents to the bottom. Please reconstitute protein in deionized sterile water to a concentration of 0.1-1.0 mg/mL. We recommend to add 5-50% of glycerol (final concentration) and aliquot for long-term storage at -20°C/-80°C. Our default final concentration of glycerol is 50%. Customers could use it as reference.

**Shelf Life**

The shelf life is related to many factors, storage state, buffer ingredients, storage temperature and the stability of the protein itself. Generally, the shelf life of liquid form is 6 months at -20°C/-80°C. The shelf life of lyophilized form is 12 months at -20°C/-80°C.