

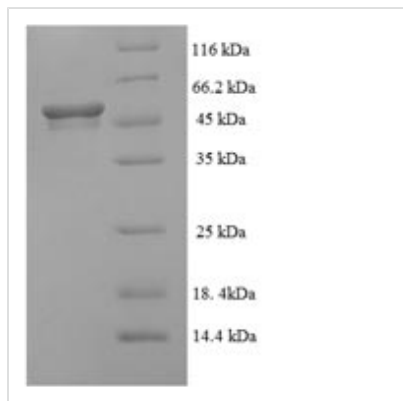


Recombinant Human Succinate-semialdehyde dehydrogenase, mitochondrial (ALDH5A1)

Product Code	CSB-YP001577HU
Relevance	Catalyzes one step in the degradation of the inhibitory neurotransmitter gamma-aminobutyric acid (GABA).
Abbreviation	Recombinant Human ALDH5A1 protein
Storage	The shelf life is related to many factors, storage state, buffer ingredients, storage temperature and the stability of the protein itself. Generally, the shelf life of liquid form is 6 months at -20°C/-80°C. The shelf life of lyophilized form is 12 months at -20°C/-80°C.
Uniprot No.	P51649
Alias	Aldehyde dehydrogenase family 5 member A1;NAD(+)-dependent succinic semialdehyde dehydrogenase
Product Type	Recombinant Protein
Immunogen Species	Homo sapiens (Human)
Purity	≥ 90% as determined by SDS-PAGE.
Sequence	AGRLAGLSAALLRTDSFVGGRWLPA AATFPVQDPASGAALGMVADCGVREA RAAVRAAYEAFRCRWREVS AKERS SLLRKWYNLMIQNKDDLARIITAESGKPLK EAHGEILYSAFFLEWFSEEARRVYGDIIHTPAKDRRALVLKQPIGVA AVITPWNF PSAMITRKVGAALAAAGCTVVVKPAEDTPFSALALAE LASQAGIPSGVYNVIPCS RKNAKEVGEAICTDPLVSKISFTGSTTTG KILLHHAANSVKRVS MELGGLAPFIV FDSANVDQAVAGAMASKFRNTGQTCVCSNQFLVQRGIHDAFVKAF AEAMKKN LRVGNGFEEGTTQG PLINEKAVEKVEKQVND AVSKGATVVTGGKRHQLGKNF FEPTLLCNVTQDMLCTHEETFGPLAPVIKFDTEEEAIAIANAADVGLAGYFYSQ DPAQIWRVAEQLEVGMVGVNEGLISSVECPFGGVKQSGLGREGSKYGIDEYL ELKYVCYGG L
Research Area	Metabolism
Source	Yeast
Target Names	ALDH5A1
Protein Names	Recommended name: Succinate-semialdehyde dehydrogenase, mitochondrial EC= 1.2.1.24 Alternative name(s): Aldehyde dehydrogenase family 5 member A1 NAD(+)-dependent succinic semialdehyde dehydrogenase
Expression Region	48-535aa
Notes	Repeated freezing and thawing is not recommended. Store working aliquots at 4°C for up to one week.
Tag Info	N-terminal 6xHis-tagged
Mol. Weight	54.3kDa

**Protein Length**

Full Length of Mature Protein

Image

(Tris-Glycine gel) Discontinuous SDS-PAGE (reduced) with 5% enrichment gel and 15% separation gel.

Reconstitution

We recommend that this vial be briefly centrifuged prior to opening to bring the contents to the bottom. Please reconstitute protein in deionized sterile water to a concentration of 0.1-1.0 mg/mL. We recommend to add 5-50% of glycerol (final concentration) and aliquot for long-term storage at -20°C/-80°C. Our default final concentration of glycerol is 50%. Customers could use it as reference.

Shelf Life

The shelf life is related to many factors, storage state, buffer ingredients, storage temperature and the stability of the protein itself. Generally, the shelf life of liquid form is 6 months at -20°C/-80°C. The shelf life of lyophilized form is 12 months at -20°C/-80°C.