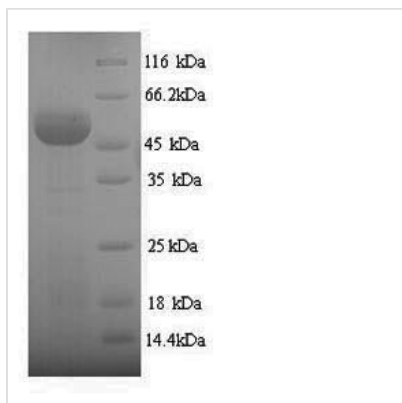




Recombinant Human Sulfite oxidase, mitochondrial (SUOX)

Product Code	CSB-YP022954HU
Abbreviation	Recombinant Human SUOX protein
Storage	The shelf life is related to many factors, storage state, buffer ingredients, storage temperature and the stability of the protein itself. Generally, the shelf life of liquid form is 6 months at -20°C/-80°C. The shelf life of lyophilized form is 12 months at -20°C/-80°C.
Uniprot No.	P51687
Product Type	Recombinant Protein
Immunogen Species	Homo sapiens (Human)
Purity	≥ 90% as determined by SDS-PAGE.
Sequence	ESTHIYTKEEVSSHTSPETGIWVTLGSEVFDVTEFVDLHPGGPSKLMLAAGGP LEPFWALYAVHNQSHVRELLAQYKIGELNPEDKVAPTIVETSOPYADDPVRHPA LKVNSQRPFNAEPPPELLTENYITPNPIFFTRNHLVPNLDPTYRLHVVGAPG GQSLSLSLDDLHNFPRYEITVTLQCAGNRRSEMTQVKEVKGLEWRTGAISTAR WAGARLCDVLAQAGHQLCETAHVCFEGLDSDPTGTAYGASIPARAMDPEA EVLLAYEMNGQPLPRDHGFPVRRVVVPGVVGARHVKWLGRVSVQPEESYSHW QRRDYKGFSPVDWETVDFDSAPSIQELPVQSAITEPRDGETVESGEVTIKGY AWSGGGRAVIRVDVSLDGGLTWQVAKLDGEEQRPRKAWAWRLWQLKAPVP AGQKELNIVCKAVDDGYNVQPDTVAPIWNLRGVLSNAWHRVHVYVSP
Research Area	Metabolism
Source	Yeast
Target Names	SUOX
Protein Names	Recommended name: Sulfite oxidase, mitochondrial EC= 1.8.3.1
Expression Region	80-545aa
Notes	Repeated freezing and thawing is not recommended. Store working aliquots at 4°C for up to one week.
Tag Info	N-terminal 6xHis-tagged
Mol. Weight	53.6kDa
Protein Length	Full Length of Mature Protein
Image	



(Tris-Glycine gel) Discontinuous SDS-PAGE (reduced) with 5% enrichment gel and 15% separation gel.

Reconstitution

We recommend that this vial be briefly centrifuged prior to opening to bring the contents to the bottom. Please reconstitute protein in deionized sterile water to a concentration of 0.1-1.0 mg/mL. We recommend to add 5-50% of glycerol (final concentration) and aliquot for long-term storage at -20°C/-80°C. Our default final concentration of glycerol is 50%. Customers could use it as reference.

Shelf Life

The shelf life is related to many factors, storage state, buffer ingredients, storage temperature and the stability of the protein itself. Generally, the shelf life of liquid form is 6 months at -20°C/-80°C. The shelf life of lyophilized form is 12 months at -20°C/-80°C.