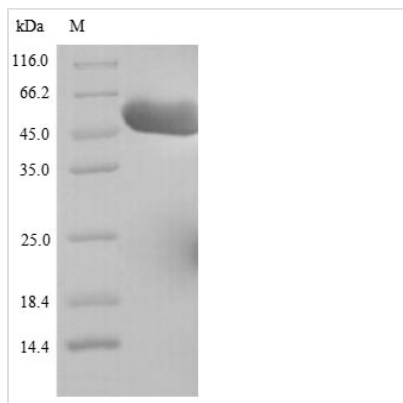




Recombinant Human Rab GDP dissociation inhibitor beta (GDI2)

Product Code	CSB-YP009354HU
Relevance	Regulates the GDP/GTP exchange reaction of most Rab proteins by inhibiting the dissociation of GDP from th, and the subsequent binding of GTP to th.
Abbreviation	Recombinant Human GDI2 protein
Storage	The shelf life is related to many factors, storage state, buffer ingredients, storage temperature and the stability of the protein itself. Generally, the shelf life of liquid form is 6 months at -20°C/-80°C. The shelf life of lyophilized form is 12 months at -20°C/-80°C.
Uniprot No.	P50395
Product Type	Recombinant Protein
Immunogen Species	Homo sapiens (Human)
Purity	≥ 90% as determined by SDS-PAGE.
Sequence	MNEEYDVIVLGTGLTECILSGIMSVNGKKVLHMDRNPYYGGESASITPLEDLK RFKIPGSPPEMGRGRDWNVDLIPKFLMANGQLVKMLLYTEVTRYLDFKVFTEG SFVYKGGKIYKVPSTEAALASSLMGLFEKRRFRKFLVYVANFDEKDPRTFEGI DPKTTMRDVYKKFDLGQDVIDFTGHALALYRTDDYLDQPCYETINRIKLYSES LARYGKSPYLYPLYGLGELPQGFARLSAIYGGTYMLNKPIEEIIVQNGKVGIVKS EGEIARCKQLICDPSYVKDRVEKVGQVIRVICILSHPIKNTNDANSCQIIIPQNQV NRKSDIYVCMISFAHNVAQAQGYIAIVSTTVETKEPEKEIRPALELLEPIEQKFVSI SDLLVPKDLGTESQIFISRTYDATTHFETTCDDIKNIYKRMTGSEFDFEEMKRKK NDIYGED
Research Area	Others
Source	Yeast
Target Names	GDI2
Protein Names	Guanosine diphosphate dissociation inhibitor 2 ;GDI-2
Expression Region	1-445aa
Notes	Repeated freezing and thawing is not recommended. Store working aliquots at 4°C for up to one week.
Tag Info	N-terminal 6xHis-tagged
Mol. Weight	52.7 kDa
Protein Length	Full Length
Image	



(Tris-Glycine gel) Discontinuous SDS-PAGE (reduced) with 5% enrichment gel and 15% separation gel.

Reconstitution

We recommend that this vial be briefly centrifuged prior to opening to bring the contents to the bottom. Please reconstitute protein in deionized sterile water to a concentration of 0.1-1.0 mg/mL. We recommend to add 5-50% of glycerol (final concentration) and aliquot for long-term storage at -20°C/-80°C. Our default final concentration of glycerol is 50%. Customers could use it as reference.

Shelf Life

The shelf life is related to many factors, storage state, buffer ingredients, storage temperature and the stability of the protein itself. Generally, the shelf life of liquid form is 6 months at -20°C/-80°C. The shelf life of lyophilized form is 12 months at -20°C/-80°C.