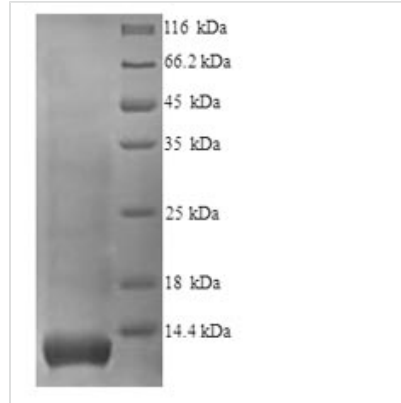


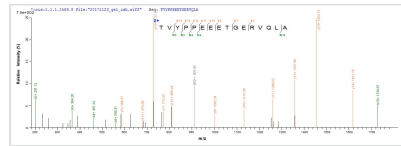


Recombinant Human Glycophorin (GYPA), partial

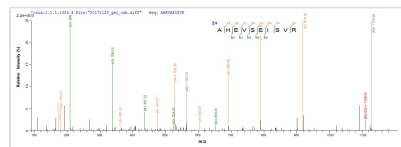
Product Code	CSB-YP010074HU
Relevance	Glycophorin A is the major intrinsic mbrane protein of the erythrocyte. The N-terminal glycosylated segment, which lies outside the erythrocyte mbrane, has MN blood group receptors. Appears to be important for the function of SLC4A1 and is required for high activity of SLC4A1. May be involved in translocation of SLC4A1 to the plasma mbrane. Is a receptor for influenza virus. Is a receptor for Plasmodium falciparum erythrocyte-binding antigen 175 (EBA-175); binding of EBA-175 is dependent on sialic acid residues of the O-linked glycans. Appears to be a receptor for Hepatitis A virus (HAV).
Abbreviation	Recombinant Human GYPA protein, partial
Storage	The shelf life is related to many factors, storage state, buffer ingredients, storage temperature and the stability of the protein itself. Generally, the shelf life of liquid form is 6 months at -20°C/-80°C. The shelf life of lyophilized form is 12 months at -20°C/-80°C.
Uniprot No.	A0A0C4DFT7
Product Type	Recombinant Proteins
Immunogen Species	Homo sapiens (Human)
Purity	Greater than 90% as determined by SDS-PAGE.
Sequence	LSTTEVAMHTSTSSSVTKSYISSQTNDTHKRDTYAATPRAHEVSEISVRTVYPP EEETGERVQLAHHFSEPE
Research Area	Cardiovascular
Source	Yeast
Target Names	GYPA
Protein Names	Recommended name: Glycophorin-AA Alternative name(s): MN sialoglycoprotein PAS-2 Sialoglycoprotein alpha CD_antigen= CD235a
Expression Region	20-91aa
Notes	Repeated freezing and thawing is not recommended. Store working aliquots at 4°C for up to one week.
Tag Info	N-terminal 6xHis-tagged
Mol. Weight	9.9kDa
Protein Length	Extracellular Domain
Image	



(Tris-Glycine gel) Discontinuous SDS-PAGE (reduced) with 5% enrichment gel and 15% separation gel.



Based on the SEQUEST from database of Yeast host and target protein, the LC-MS/MS Analysis result of CSB-YP010074HU could indicate that this peptide derived from Yeast-expressed Homo sapiens (Human) GYPA GPA.



Based on the SEQUEST from database of Yeast host and target protein, the LC-MS/MS Analysis result of CSB-YP010074HU could indicate that this peptide derived from Yeast-expressed Homo sapiens (Human) GYPA GPA.

Shelf Life

The shelf life is related to many factors, storage state, buffer ingredients, storage temperature and the stability of the protein itself. Generally, the shelf life of liquid form is 6 months at -20°C/-80°C. The shelf life of lyophilized form is 12 months at -20°C/-80°C.