



Recombinant Human Glycogen phosphorylase, liver form (PYGL), partial

Product Code	CSB-YP019122HU
Relevance	Phosphorylase is an important allosteric enzyme in carbohydrate metabolism. Enzymes from different sources differ in their regulatory mechanisms and in their natural substrates. However, all known phosphorylases share catalytic and structural properties.
Abbreviation	Recombinant Human PYGL protein, partial
Storage	The shelf life is related to many factors, storage state, buffer ingredients, storage temperature and the stability of the protein itself. Generally, the shelf life of liquid form is 6 months at -20°C/-80°C. The shelf life of lyophilized form is 12 months at -20°C/-80°C.
Uniprot No.	P06737
Product Type	Recombinant Protein
Immunogen Species	Homo sapiens (Human)
Purity	Greater than 90% as determined by SDS-PAGE.
Sequence	AKPLTDQEKRRQISIRGIVGVENVAELKKSFNRLHLHFTLVKDRNVATTRDYYFA LAHTVRDHLVGRWIRTQQHYDYKCPKRVYYLSLEFYMGRTLQNTMINLGLQN ACDEAIYQLGLDIEELEIEEDAGLNGGGLGRLAACFLDSMATLGLAAYGYGIR YEGIFNQKIRDGWQVEEADDWLRYGNPWEKSRPEFMLPVHFGYKVEHTNT GTKWIDTQVVLALPYDTPVPGYMNNTVNTMRLWSARAPNDFNLRDFNVGDYI QAVLDRNLAENISRVLYPNDNFFEGKELRLKQEYFVVAATLQDIIRRFKASKFG STRGAGTVFDAPDQVAIQLNDTHPALAIPELMRIFVDIEKLPWSKAWELTQKT FAYTNHTVLPEALERWPVDLVEKLLPRHLEIIEINQKHLDRIVALFPKDVDRLR RMSLIEEEGSKRINMAHLCIVGSHAVNGVAKIHSDIVKTKVFKDFSELEPKFKQ NKTNGITPRRWLLLCNPGLAELIAEKIGEDYVKDLSQLTKLHSFLGDDVFLRELA KVKQENKLFKFSQFLETEYKVKINPSSMFDVQVKRIHEYKRQLLNCLHVITMYNR IKKDPKFLFVPRTVIIGGKAAPGYHMAKMIIKLITSVADVNNNDPMVGSKLVIFL ENYRVSLAEKVIPATDLSEQISTAGTEASGTGNMKFMLNGALTIGTMDGANVE MAEEAGEENLFIGMRIDDVAALDKKGYEAKYEEALPELKLVIDQIDNGFFSP KQPDFKDIINMLFYHDFKVFADYEAYVKCQDKVSQLYMNPKAWNTMVLKNI AASGKFSSDRTIKEYAQNIWNVEPSDLKISLSNESNKVNG
Research Area	Metabolism
Source	Yeast
Target Names	PYGL
Protein Names	Recommended name: Glycogen phosphorylase, liver form EC= 2.4.1.1
Expression Region	2-846aa
Notes	Repeated freezing and thawing is not recommended. Store working aliquots at 4°C for up to one week.

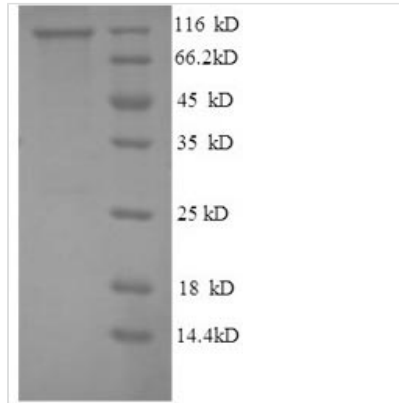


Tag Info N-terminal 6xHis-tagged

Mol. Weight 98.9kDa

Protein Length Partial

Image



(Tris-Glycine gel) Discontinuous SDS-PAGE (reduced) with 5% enrichment gel and 15% separation gel.

Reconstitution

We recommend that this vial be briefly centrifuged prior to opening to bring the contents to the bottom. Please reconstitute protein in deionized sterile water to a concentration of 0.1-1.0 mg/mL. We recommend to add 5-50% of glycerol (final concentration) and aliquot for long-term storage at -20°C/-80°C. Our default final concentration of glycerol is 50%. Customers could use it as reference.

Shelf Life

The shelf life is related to many factors, storage state, buffer ingredients, storage temperature and the stability of the protein itself. Generally, the shelf life of liquid form is 6 months at -20°C/-80°C. The shelf life of lyophilized form is 12 months at -20°C/-80°C.