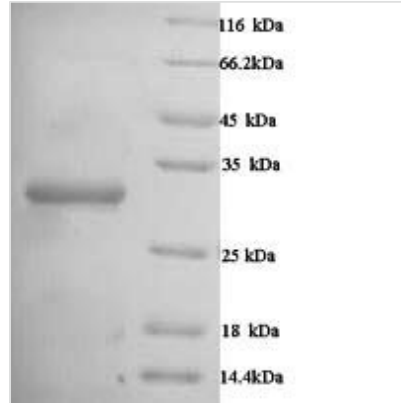




Recombinant Human Carbonic anhydrase 1 (CA1)

Product Code	CSB-YP004364HU
Relevance	Reversible hydration of carbon dioxide. Can hydrates cyanamide to urea.
Abbreviation	Recombinant Human CA1 protein
Storage	The shelf life is related to many factors, storage state, buffer ingredients, storage temperature and the stability of the protein itself. Generally, the shelf life of liquid form is 6 months at -20°C/-80°C. The shelf life of lyophilized form is 12 months at -20°C/-80°C.
Uniprot No.	P00915
Alias	Carbonate dehydratase I Carbonic anhydrase B ;CAB Carbonic anhydrase I ;CA-I
Product Type	Recombinant Protein
Immunogen Species	Homo sapiens (Human)
Purity	≥ 90% as determined by SDS-PAGE.
Sequence	ASPDWGYDDKNGPEQWSKLYPIANGNNQSPVDIKTSETKHDTSLKPISVSYNP ATAKEIINVGHSHVNFEDNDNRSVLKGGPFSDSYRLFQFHFWGSTNEHGS EHTVDGVKYSaelhvahwNSAKYSSLAEaASKADGLAVIGVLMKVGEANPKL QKVLdalQAIKTKGKRAPFTNFDPSTLLPSSLDfWtYPGSLThPPLYeSVTWII CKeSISVSSEQLAQFRSLLSNVEGDNAVPMQHNNRPTQPLKGRTVRASF
Research Area	Cardiovascular
Source	Yeast
Target Names	CA1
Protein Names	Recommended name: Carbonic anhydrase 1 EC= 4.2.1.1 Alternative name(s): Carbonate dehydratase I Carbonic anhydrase B Short name= CAB Carbonic anhydrase I Short name= CA-I
Expression Region	2-261aa
Notes	Repeated freezing and thawing is not recommended. Store working aliquots at 4°C for up to one week.
Tag Info	N-terminal 6xHis-tagged
Mol. Weight	30.7kDa
Protein Length	Full Length of Mature Protein
Image	



(Tris-Glycine gel) Discontinuous SDS-PAGE (reduced) with 5% enrichment gel and 15% separation gel.

Reconstitution

We recommend that this vial be briefly centrifuged prior to opening to bring the contents to the bottom. Please reconstitute protein in deionized sterile water to a concentration of 0.1-1.0 mg/mL. We recommend to add 5-50% of glycerol (final concentration) and aliquot for long-term storage at -20°C/-80°C. Our default final concentration of glycerol is 50%. Customers could use it as reference.

Shelf Life

The shelf life is related to many factors, storage state, buffer ingredients, storage temperature and the stability of the protein itself. Generally, the shelf life of liquid form is 6 months at -20°C/-80°C. The shelf life of lyophilized form is 12 months at -20°C/-80°C.