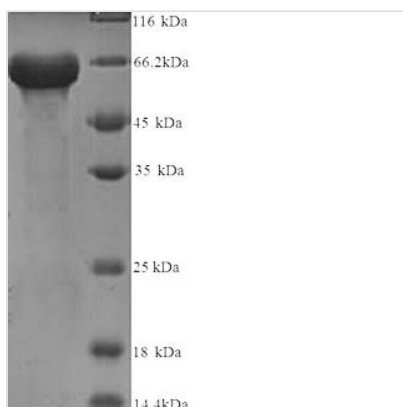




# Recombinant Human KeRatin, type I cytoskeletal 14 (KRT14)

<b>Product Code</b>	CSB-YP012512HU
<b>Relevance</b>	The nonhelical tail domain is involved in promoting KRT5-KRT14 filaments to self-organize into large bundles and enhances the mechanical properties involved in resilience of keratin intermediate filaments in vitro.
<b>Abbreviation</b>	Recombinant Human KRT14 protein
<b>Storage</b>	The shelf life is related to many factors, storage state, buffer ingredients, storage temperature and the stability of the protein itself. Generally, the shelf life of liquid form is 6 months at -20°C/-80°C. The shelf life of lyophilized form is 12 months at -20°C/-80°C.
<b>Uniprot No.</b>	P02533
<b>Alias</b>	Cytokeratin-14 ;CK-14Keratin-14 ;K14
<b>Product Type</b>	Recombinant Protein
<b>Immunogen Species</b>	Homo sapiens (Human)
<b>Purity</b>	Greater than 90% as determined by SDS-PAGE.
<b>Sequence</b>	MTTC SRQFTSSSSMKGSCGIGGGIGGGSSRISSVLAGGSCRAPSTYGGGLSV SSSRFSSGGACGLGGGYGGGFSSSSSSFGSGFGGGYGGGLGAGLGGGFGG GFAGGDGLLVGSEKVTMQNLNDR LASYLDKVRALEEANADLEV KIRDWYQRQ RPAEIKDYSPYFKTIEDLRNKILTATVDNANVLLQIDNARLAADDFRTKYETELNL RMSVEADINGLRRVLDLTLARADLEMQIESLKEELAYLKKNH EEE MNALRGQ VGGDVNVEMDAAPGVDLSRILNEMRDQYEKMAEKNR KDAEEWFFTKTEELN REVATNSELVQSGKSEISELRRTMQNLEIELQSLSMKASLENSLEETKGRYC MQLAQIQEMIGSVEEQLAQLRCEMEQQNQEYKILLDVKTRLEQEIATYRRLLEG EDAHLSSSQFSSGSQSSRDVTSSSRQIRTKVMDVHDGKVVSTHEQVLRTKN
<b>Research Area</b>	Signal Transduction
<b>Source</b>	Yeast
<b>Target Names</b>	KRT14
<b>Protein Names</b>	Recommended name: Keratin, type I cytoskeletal 14 Alternative name(s): Cytokeratin-14 Short name= CK-14 Keratin-14 Short name= K14
<b>Expression Region</b>	1-472aa
<b>Notes</b>	Repeated freezing and thawing is not recommended. Store working aliquots at 4°C for up to one week.
<b>Tag Info</b>	N-terminal 6xHis-tagged
<b>Mol. Weight</b>	53.6kDa
<b>Protein Length</b>	Full Length
<b>Image</b>	



(Tris-Glycine gel) Discontinuous SDS-PAGE (reduced) with 5% enrichment gel and 15% separation gel.

### Reconstitution

We recommend that this vial be briefly centrifuged prior to opening to bring the contents to the bottom. Please reconstitute protein in deionized sterile water to a concentration of 0.1-1.0 mg/mL. We recommend to add 5-50% of glycerol (final concentration) and aliquot for long-term storage at -20°C/-80°C. Our default final concentration of glycerol is 50%. Customers could use it as reference.

### Shelf Life

The shelf life is related to many factors, storage state, buffer ingredients, storage temperature and the stability of the protein itself. Generally, the shelf life of liquid form is 6 months at -20°C/-80°C. The shelf life of lyophilized form is 12 months at -20°C/-80°C.