

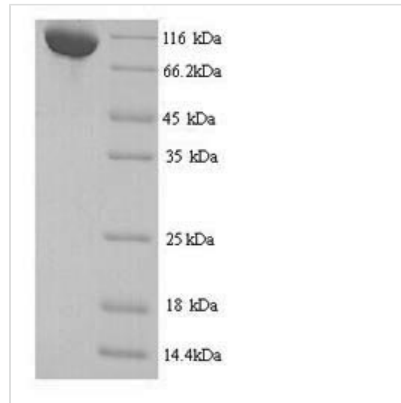


Recombinant Mouse Transcriptional repressor CTCFL (Ctcf1)

Product Code	CSB-YP006139MO
Relevance	Testis-specific DNA binding protein responsible for insulator function, nuclear architecture and transcriptional control, which probably acts by recruiting epigenetic chromatin modifiers. Plays a key role in gene imprinting in male germline, by participating in the establishment of differential methylation at the IGF2/H19 imprinted control region (ICR). Directly binds the unmethylated H19 ICR and recruits the PRMT7 methyltransferase, leading to methylate histone H4 'Arg-3' to form H4R3sme2. This probably leads to recruit de novo DNA methyltransferases at these sites. Seems to act as tumor suppressor. In association with DNMT1 and DNMT3B, involved in activation of BAG1 gene expression by binding to its promoter. Required for dimethylation of H3 lysine 4 (H3K4me2) of MYC and BRCA1 promoters.
Abbreviation	Recombinant Mouse Ctcf1 protein
Storage	The shelf life is related to many factors, storage state, buffer ingredients, storage temperature and the stability of the protein itself. Generally, the shelf life of liquid form is 6 months at -20°C/-80°C. The shelf life of lyophilized form is 12 months at -20°C/-80°C.
Uniprot No.	A2APF3
Alias	Brother of the regulator of imprinted sites CCCTC-binding factor CTCF paralog CTCF-like protein
Product Type	Recombinant Protein
Immunogen Species	Mus musculus (Mouse)
Purity	≥ 90% as determined by SDS-PAGE.
Sequence	MAAAEVPVPSGYFTQIKEQKLKPGDLEEEKEEDGVQRVEAQEGVVKEVEAEN SCLLLEARAPVESDRRILTLQTVHLESQDVHLQGLGWLSVPHSEELSGTVPEA EGILQLPSVLWLDPEPQLSLQHCVTVSIPEELYPPEELQRIHFHLLRENVLMAE ENPELTPDLDESTALKKPEEDEKDKQLPPQGETDKREERLLLLLEMKPKEGKDDE IVLTISHLSLEEQQDPPAANQTSVPGAKAAKPKRRRRTKGGKQSFQCDTCPFT SSKLSTFNRIHIHSNERPHLCHLCLKAFRTVTLLRNHVNTHTGTRPHKCRDCD MAFVTSGELVRHRRYKHTYEKPFKCSLCKYASVEASKMKRHIRSHTGERPFQ CCQCAYASRDSYKLRHMRTHSGEKPYECPTCHVRFTQSGTMKIHIAQKHGE NVPKYECPHCATIIARKSDLRVHLRNLHSQSPEEMKCRYCPAGFHERYALIQH QRTHKNEKKFKCKQCDYACKQERCLKAHMRMHTGEKPFSLACNKHFRQKQ LLTVHLRKYHDPNFVPNLHLCLCKDKRFSRWSNLQRHRKKCDPEHETLAPNK DRRPVTRTQASEGEAGHKEGEPQCPGEQALGHQGEAAGSQSPDHGLTCEIIF NMMDK
Research Area	Others
Source	Yeast



Target Names	Ctcf1
Protein Names	Recommended name: Transcriptional repressor CTCFL Alternative name(s): Brother of the regulator of imprinted sites CCCTC-binding factor CTCF paralog CTCF-like protein
Expression Region	1-636aa
Notes	Repeated freezing and thawing is not recommended. Store working aliquots at 4°C for up to one week.
Tag Info	N-terminal 6xHis-tagged
Mol. Weight	75.1kDa
Protein Length	Full Length

Image


(Tris-Glycine gel) Discontinuous SDS-PAGE (reduced) with 5% enrichment gel and 15% separation gel.

Reconstitution	We recommend that this vial be briefly centrifuged prior to opening to bring the contents to the bottom. Please reconstitute protein in deionized sterile water to a concentration of 0.1-1.0 mg/mL. We recommend to add 5-50% of glycerol (final concentration) and aliquot for long-term storage at -20°C/-80°C. Our default final concentration of glycerol is 50%. Customers could use it as reference.
Shelf Life	The shelf life is related to many factors, storage state, buffer ingredients, storage temperature and the stability of the protein itself. Generally, the shelf life of liquid form is 6 months at -20°C/-80°C. The shelf life of lyophilized form is 12 months at -20°C/-80°C.