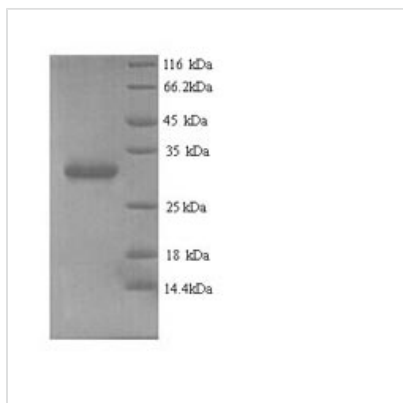




# Recombinant Human Chromobox protein homolog 7 (CBX7)

<b>Product Code</b>	CSB-YP004603HU
<b>Relevance</b>	Component of a Polycomb group (PcG) multiprotein PRC1-like complex, a complex class required to maintain the transcriptionally repressive state of many genes, including Hox genes, throughout development. PcG PRC1 complex acts via chromatin remodeling and modification of histones; it mediates monoubiquitination of histone H2A 'Lys-119', rendering chromatin heritably changed in its expressibility. Promotes histone H3 trimethylation at 'Lys-9' (H3K9me3). Binds to trimethylated lysine residues in histones, and possibly also other proteins. Regulator of cellular lifespan by maintaining the repression of CDKN2A, but not by inducing telomerase activity.
<b>Abbreviation</b>	Recombinant Human CBX7 protein
<b>Storage</b>	The shelf life is related to many factors, storage state, buffer ingredients, storage temperature and the stability of the protein itself. Generally, the shelf life of liquid form is 6 months at -20°C/-80°C. The shelf life of lyophilized form is 12 months at -20°C/-80°C.
<b>Uniprot No.</b>	O95931
<b>Product Type</b>	Recombinant Protein
<b>Immunogen Species</b>	Homo sapiens (Human)
<b>Purity</b>	Greater than 90% as determined by SDS-PAGE.
<b>Sequence</b>	MELSAIGEQVFAVESIRKKRVRKGGKVEYLVKWKGWPPKYSTWEPEEHILDPRL VMAYEEKEERDRASGYRKRGPCKRLLLLQRLYSMDLRSSHAKGKEKLCFSL TCPLGSGSPEGVVKAGAPELVDKGPLVPTLPFPLRKPRKAHKYLRLSRKKFPP RGNLESHSHRRELFQEPAPDVLQAAGEWEPAAQPPEEEADADLAEGPPP WTPALPSSEVTVDITANSITVTFREAQAAEGFFRDRSGKF
<b>Research Area</b>	Transcription
<b>Source</b>	Yeast
<b>Target Names</b>	CBX7
<b>Protein Names</b>	Recommended name: Chromobox protein homolog 7
<b>Expression Region</b>	1-251aa
<b>Notes</b>	Repeated freezing and thawing is not recommended. Store working aliquots at 4°C for up to one week.
<b>Tag Info</b>	N-terminal 6xHis-tagged
<b>Mol. Weight</b>	30.3kDa
<b>Protein Length</b>	Full Length
<b>Image</b>	



(Tris-Glycine gel) Discontinuous SDS-PAGE (reduced) with 5% enrichment gel and 15% separation gel.

### Reconstitution

We recommend that this vial be briefly centrifuged prior to opening to bring the contents to the bottom. Please reconstitute protein in deionized sterile water to a concentration of 0.1-1.0 mg/mL. We recommend to add 5-50% of glycerol (final concentration) and aliquot for long-term storage at -20°C/-80°C. Our default final concentration of glycerol is 50%. Customers could use it as reference.

### Shelf Life

The shelf life is related to many factors, storage state, buffer ingredients, storage temperature and the stability of the protein itself. Generally, the shelf life of liquid form is 6 months at -20°C/-80°C. The shelf life of lyophilized form is 12 months at -20°C/-80°C.