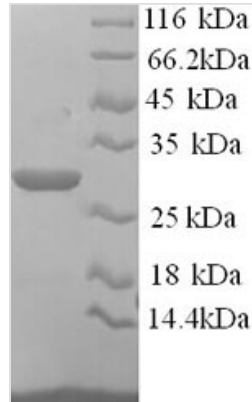




Recombinant Mouse Asialoglycoprotein receptor 1 (Asgr1), partial

Product Code	CSB-YP002207MO
Relevance	Mediates the endocytosis of plasma glycoproteins to which the terminal sialic acid residue on their complex carbohydrate moieties has been removed. The receptor recognizes terminal galactose and N-acetylgalactosamine units. After ligand binding to the receptor, the resulting complex is internalized and transported to a sorting organelle, where receptor and ligand are disassociated. The receptor then returns to the cell membrane surface.
Abbreviation	Recombinant Mouse Asgr1 protein, partial
Storage	The shelf life is related to many factors, storage state, buffer ingredients, storage temperature and the stability of the protein itself. Generally, the shelf life of liquid form is 6 months at -20°C/-80°C. The shelf life of lyophilized form is 12 months at -20°C/-80°C.
Uniprot No.	P34927
Alias	Hepatic lectin 1 ;HL-1 ;mHL-1
Product Type	Recombinant Protein
Immunogen Species	Mus musculus (Mouse)
Purity	Greater than 90% as determined by SDS-PAGE.
Sequence	QNSQLREDLLALRQNFSLTVSTEDQVKALSTQGSSVGRKMKLVESKLEKQQ KDLTEDHSSLLLHVKQLVSDVRSLSQMAAFRNGNGSERTCCPINWVEYEGSC YWFSSSVRPWTEADKYCQLEN AHLVVVTSRDEQNF LQRHMGPLNTWIGLTD QNGPWKWDGTDYETGFQNRPEQPDN WYGHGLGGGEDCAHFTTDGRW NDDVCRRPYRWVCETKLDKAN
Research Area	Others
Source	Yeast
Target Names	Asgr1
Protein Names	Hepatic lectin 1 ;HL-1 ;mHL-1
Expression Region	61-284aa
Notes	Repeated freezing and thawing is not recommended. Store working aliquots at 4°C for up to one week.
Tag Info	N-terminal 6xHis-tagged
Mol. Weight	27.8 kDa
Protein Length	Extracellular Domain
Image	



(Tris-Glycine gel) Discontinuous SDS-PAGE (reduced) with 5% enrichment gel and 15% separation gel.

Reconstitution

We recommend that this vial be briefly centrifuged prior to opening to bring the contents to the bottom. Please reconstitute protein in deionized sterile water to a concentration of 0.1-1.0 mg/mL. We recommend to add 5-50% of glycerol (final concentration) and aliquot for long-term storage at -20°C/-80°C. Our default final concentration of glycerol is 50%. Customers could use it as reference.

Shelf Life

The shelf life is related to many factors, storage state, buffer ingredients, storage temperature and the stability of the protein itself. Generally, the shelf life of liquid form is 6 months at -20°C/-80°C. The shelf life of lyophilized form is 12 months at -20°C/-80°C.