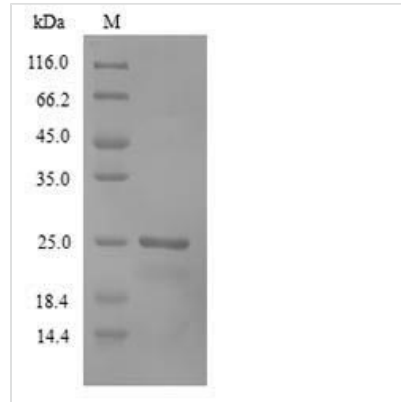




# Recombinant Human Recoverin (RCVRN)

<b>Product Code</b>	CSB-YP019519HU
<b>Relevance</b>	Seems to be implicated in the pathway from retinal rod guanylate cyclase to rhodopsin. May be involved in the inhibition of the phosphorylation of rhodopsin in a calcium-dependent manner. The calcium-bound recoverin prolongs the photoresponse.
<b>Abbreviation</b>	Recombinant Human RCVRN protein
<b>Storage</b>	The shelf life is related to many factors, storage state, buffer ingredients, storage temperature and the stability of the protein itself. Generally, the shelf life of liquid form is 6 months at -20°C/-80°C. The shelf life of lyophilized form is 12 months at -20°C/-80°C.
<b>Uniprot No.</b>	P35243
<b>Alias</b>	Cancer-associated retinopathy protein Short name: Protein CAR
<b>Product Type</b>	Recombinant Protein
<b>Immunogen Species</b>	Homo sapiens (Human)
<b>Purity</b>	≥ 90% as determined by SDS-PAGE.
<b>Sequence</b>	GNSKSGALSKEILEELQLNTKFSEEELCSWYQSFLKDCPTGRITQQQFQSIYAK FFPDTDPKAYAQHVFERSFDSNLDGTLDFKEYVIALHMTTAGKTNQKLEWAFSL YDVDGNGTISKNEVLEIVMAIFKMITPEDVKLLPDDENTPEKRAEKIWKYFGKN DDDKLTEKEFIEGTLANKEILRLIQFEPQKVKEKMKNA
<b>Research Area</b>	Neuroscience
<b>Source</b>	Yeast
<b>Target Names</b>	RCVRN
<b>Protein Names</b>	Recommended name: Recoverin Alternative name(s): Cancer-associated retinopathy protein Short name= Protein CAR
<b>Expression Region</b>	2-200aa
<b>Notes</b>	Repeated freezing and thawing is not recommended. Store working aliquots at 4°C for up to one week.
<b>Tag Info</b>	N-terminal 6xHis-tagged
<b>Mol. Weight</b>	25.0kDa
<b>Protein Length</b>	Full Length of Mature Protein
<b>Image</b>	



(Tris-Glycine gel) Discontinuous SDS-PAGE (reduced) with 5% enrichment gel and 15% separation gel.

### Reconstitution

We recommend that this vial be briefly centrifuged prior to opening to bring the contents to the bottom. Please reconstitute protein in deionized sterile water to a concentration of 0.1-1.0 mg/mL. We recommend to add 5-50% of glycerol (final concentration) and aliquot for long-term storage at -20°C/-80°C. Our default final concentration of glycerol is 50%. Customers could use it as reference.

### Shelf Life

The shelf life is related to many factors, storage state, buffer ingredients, storage temperature and the stability of the protein itself. Generally, the shelf life of liquid form is 6 months at -20°C/-80°C. The shelf life of lyophilized form is 12 months at -20°C/-80°C.