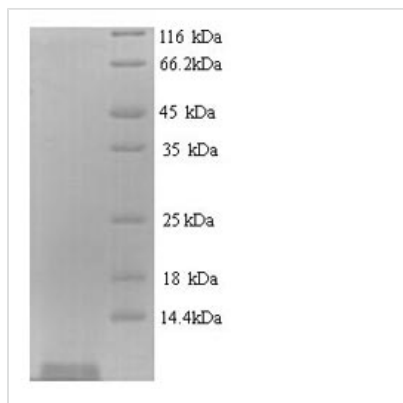




Recombinant Enterobacteria phage H19B Shiga-like toxin 1 subunit B (stxB)

Product Code	CSB-YP300809EKZ
Relevance	The B subunit is responsible for the binding of the holotoxin to specific receptors on the target cell surface, such as globotriaosylceramide (Gb3) in human intestinal microvilli.
Abbreviation	Recombinant Enterobacteria phage H19B stxB protein
Storage	The shelf life is related to many factors, storage state, buffer ingredients, storage temperature and the stability of the protein itself. Generally, the shelf life of liquid form is 6 months at -20°C/-80°C. The shelf life of lyophilized form is 12 months at -20°C/-80°C.
Uniprot No.	P69179
Alias	Verocytotoxin 1 subunit B ;Verotoxin 1 subunit B
Product Type	Recombinant Protein
Immunogen Species	Enterobacteria phage H19B (Bacteriophage H19B)
Purity	≥ 90% as determined by SDS-PAGE.
Sequence	TPDCVTGKVEYTKYNDDDTFTVKVGDKELFTNRWNLQSLLLSAQITGMTVTIKT NACHNGGGGFSEVIFR
Research Area	Others
Source	Yeast
Target Names	stxB
Protein Names	Recommended name: Shiga-like toxin 1 subunit B Short name= SLT-1 B subunit Short name= SLT-1b Short name= SLT-1b Alternative name(s): Verocytotoxin 1 subunit B Short name= Verotoxin 1 subunit B
Expression Region	21-89aa
Notes	Repeated freezing and thawing is not recommended. Store working aliquots at 4°C for up to one week.
Tag Info	N-terminal 6xHis-tagged
Mol. Weight	9.7kDa
Protein Length	Full Length of Mature Protein
Image	



(Tris-Glycine gel) Discontinuous SDS-PAGE (reduced) with 5% enrichment gel and 15% separation gel.

Reconstitution

We recommend that this vial be briefly centrifuged prior to opening to bring the contents to the bottom. Please reconstitute protein in deionized sterile water to a concentration of 0.1-1.0 mg/mL. We recommend to add 5-50% of glycerol (final concentration) and aliquot for long-term storage at -20°C/-80°C. Our default final concentration of glycerol is 50%. Customers could use it as reference.

Shelf Life

The shelf life is related to many factors, storage state, buffer ingredients, storage temperature and the stability of the protein itself. Generally, the shelf life of liquid form is 6 months at -20°C/-80°C. The shelf life of lyophilized form is 12 months at -20°C/-80°C.