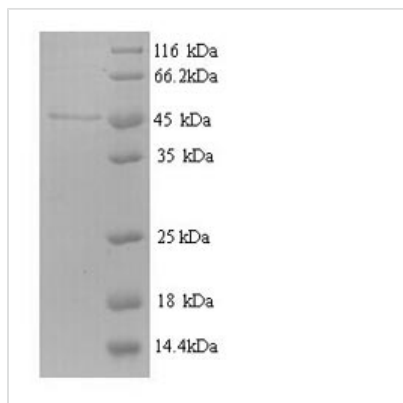




Recombinant Escherichia coli Ribonucleoside-diphosphate reductase 1 subunit beta (nrdB)

Product Code	CSB-YP303206ENV
Relevance	Provides the precursors necessary for DNA synthesis. Catalyzes the biosynthesis of deoxyribonucleotides from the corresponding ribonucleotides. R2 contains the tyrosyl radical required for catalysis.
Abbreviation	Recombinant E.coli nrdB protein
Storage	The shelf life is related to many factors, storage state, buffer ingredients, storage temperature and the stability of the protein itself. Generally, the shelf life of liquid form is 6 months at -20°C/-80°C. The shelf life of lyophilized form is 12 months at -20°C/-80°C.
Uniprot No.	P69924
Alias	Protein B2 Protein R2 Ribonucleotide reductase 1
Product Type	Recombinant Protein
Immunogen Species	Escherichia coli (strain K12)
Purity	≥ 90% as determined by SDS-PAGE.
Sequence	AYTTFSQTKNDQLKEPMFFGQPVNVARYDQQKYDIFEKLIKQLSFFWRPEEV DVSRRIDYQALPEHEKHIFISNLKYQTLDSIQGRSPNVALLPLISPELETWVE TWFSETIHSRSYTHIIRNIVNDPSVVFDDIVTNEQIQKRAEGISSYYDELIEMTS YWHLLGEGTHTVNGKTVTVSLRELKKKLYLCLMSVNALEAIRFYVSFACSFAPA ERELMEGNAKIIRLIARDEALHLTGTQHMLNLLRSGADDPEMAEIAEECKQCEY DLFVQAAQQEKDWADYLFRDGSMIGLNKDILCQYVEYITNIRMQAVGLDLPFQ TRSNPIPWINTWLVSDNVQVAPQEVEVSSYLVGQIDSEVDTDDLSNFQL
Research Area	Others
Source	Yeast
Target Names	nrdB
Protein Names	Recommended name: Ribonucleoside-diphosphate reductase 1 subunit beta EC= 1.17.4.1 Alternative name(s): Protein B2 Protein R2 Ribonucleotide reductase 1
Expression Region	2-376aa
Notes	Repeated freezing and thawing is not recommended. Store working aliquots at 4°C for up to one week.
Tag Info	N-terminal 6xHis-tagged
Mol. Weight	45.4kDa
Protein Length	Full Length of Mature Protein
Image	



(Tris-Glycine gel) Discontinuous SDS-PAGE (reduced) with 5% enrichment gel and 15% separation gel.

Reconstitution

We recommend that this vial be briefly centrifuged prior to opening to bring the contents to the bottom. Please reconstitute protein in deionized sterile water to a concentration of 0.1-1.0 mg/mL. We recommend to add 5-50% of glycerol (final concentration) and aliquot for long-term storage at $-20^{\circ}\text{C}/-80^{\circ}\text{C}$. Our default final concentration of glycerol is 50%. Customers could use it as reference.

Shelf Life

The shelf life is related to many factors, storage state, buffer ingredients, storage temperature and the stability of the protein itself. Generally, the shelf life of liquid form is 6 months at $-20^{\circ}\text{C}/-80^{\circ}\text{C}$. The shelf life of lyophilized form is 12 months at $-20^{\circ}\text{C}/-80^{\circ}\text{C}$.