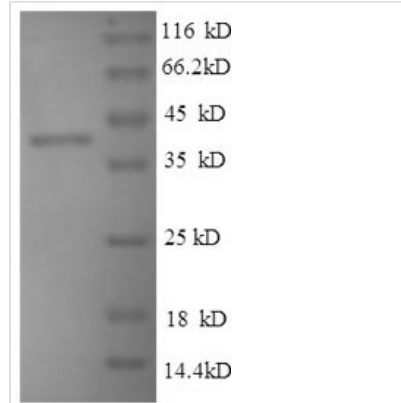




Recombinant Mouse Thrombospondin-1 (Thbs1), Partial

Product Code	CSB-EP023487MO
Relevance	Adhesive glycoprotein that mediates cell-to-cell and cell-to-matrix interactions. Binds heparin. May play a role in dentinogenesis and/or maintenance of dentin and dental pulp. Ligand for CD36 mediating antiangiogenic properties . Plays a role in ER stress response, via its interaction with the activating transcription factor 6 alpha (ATF6) which produces adaptive ER stress response factors. ¹ Publication
Abbreviation	Recombinant Mouse Thbs1 protein, partial
Storage	The shelf life is related to many factors, storage state, buffer ingredients, storage temperature and the stability of the protein itself. Generally, the shelf life of liquid form is 6 months at -20°C/-80°C. The shelf life of lyophilized form is 12 months at -20°C/-80°C.
Uniprot No.	Q80YQ1
Product Type	Recombinant Protein
Purity	Greater than 90% as determined by SDS-PAGE.
Sequence	NRIPESGGDNGVDFIFELIGGARRGPGRRLLVKGQDLSSPAFRIENANLIPAVPD DKFQDLLDAVWADKGFIFLASLRQMKKTRGTL LAVERKDNTGQIFSVVSNGKA GTLDSLSPGKQQVVSVEEALLATGQWKSITLFVQEDRAQLYIDCDKMESAE LDVPIQSIFTRDLASVARLRVAKGDVNDNFQGV LQNVRFVFGTT PEDILRNKGC SSSATNVLLTLDNNVNGSSPAIRTNYIGHKTKDLQAICGLSCDELSSMVLELK GLRTIVTTLQDSIRKVTEENRELVSELKRPP LCFHNGVQYKNNEEWTVDSCTE CHCQNSVTICK
Source	E.coli
Target Names	Thbs1
Expression Region	19-350aa
Notes	Repeated freezing and thawing is not recommended. Store working aliquots at 4°C for up to one week.
Tag Info	N-terminal 6xHis-tagged
Mol. Weight	40.6kDa
Protein Length	Partial
Image	



(Tris-Glycine gel) Discontinuous SDS-PAGE (reduced) with 5% enrichment gel and 15% separation gel.

Reconstitution

We recommend that this vial be briefly centrifuged prior to opening to bring the contents to the bottom. Please reconstitute protein in deionized sterile water to a concentration of 0.1-1.0 mg/mL. We recommend to add 5-50% of glycerol (final concentration) and aliquot for long-term storage at -20°C/-80°C. Our default final concentration of glycerol is 50%. Customers could use it as reference.

Shelf Life

The shelf life is related to many factors, storage state, buffer ingredients, storage temperature and the stability of the protein itself. Generally, the shelf life of liquid form is 6 months at -20°C/-80°C. The shelf life of lyophilized form is 12 months at -20°C/-80°C.