



Recombinant Human Complement C4-B (C4B), partial

| | |
|--------------------------|--|
| Product Code | CSB-YP313364HU |
| Relevance | Non-enzymatic component of the C3 and C5 convertases and thus essential for the propagation of the classical complement pathway. Covalently binds to immunoglobulins and immune complexes and enhances the solubilization of immune aggregates and the clearance of IC through CR1 on erythrocytes. C4A isotype is responsible for effective binding to form amide bonds with immune aggregates or protein antigens, while C4B isotype catalyzes the transacylation of the thioester carbonyl group to form ester bonds with carbohydrate antigens. Derived from proteolytic degradation of complement C4, C4a anaphylatoxin is a mediator of local inflammatory process. It induces the contraction of smooth muscle, increases vascular permeability and causes histamine release from mast cells and basophilic leukocytes. |
| Abbreviation | Recombinant Human C4B protein, partial |
| Storage | The shelf life is related to many factors, storage state, buffer ingredients, storage temperature and the stability of the protein itself. Generally, the shelf life of liquid form is 6 months at -20°C/-80°C. The shelf life of lyophilized form is 12 months at -20°C/-80°C. |
| Uniprot No. | P0C0L5 |
| Alias | Basic complement C4C3 and PZP-like alpha-2-macroglobulin domain-containing protein 3 |
| Product Type | Recombinant Protein |
| Immunogen Species | Homo sapiens (Human) |
| Purity | ≥ 90% as determined by SDS-PAGE. |
| Sequence | EAPKVVVEEQESRVHYTVCIWRNGKVGLSGMAIADVTLTLLSGFHALRADLEKLTS LSDRYVSHFETEGPHVLLYFDSVPTSRECVGF EAVQVEVPVGLVQPASATLYDY YNPERRCSVFGAPSKSRLLATLCSAEVCQCAEGKCPRQRRALERGLQDED GYRMKFACYYPVEYGFQVKVLREDSRAAFRLFETKITQVLHFTKDVKAAANQ MRNFLVRASCRLRLEPGKEYLIMGLDGATYDLEGHPQYLLDSNSWIEEMPSE LCRSTRQRAACAQLNDFLQEYGTQGCQV |
| Research Area | Immunology |
| Source | Yeast |
| Target Names | C4B |
| Protein Names | Recommended name: Complement C4-B Alternative name(s): Basic complement C4 C3 and PZP-like alpha-2-macroglobulin domain-containing protein 3 Cleaved into the following 6 chains: 1. Complement C4 beta chain 2. Complement C4-B alpha chain |
| Expression Region | 1454-1744aa |



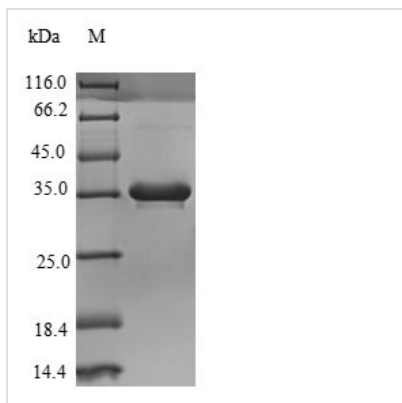
Notes Repeated freezing and thawing is not recommended. Store working aliquots at 4°C for up to one week.

Tag Info N-terminal 6xHis-tagged

Mol. Weight 35.1kDa

Protein Length Partial

Image



(Tris-Glycine gel) Discontinuous SDS-PAGE (reduced) with 5% enrichment gel and 15% separation gel.

Reconstitution

We recommend that this vial be briefly centrifuged prior to opening to bring the contents to the bottom. Please reconstitute protein in deionized sterile water to a concentration of 0.1-1.0 mg/mL. We recommend to add 5-50% of glycerol (final concentration) and aliquot for long-term storage at -20°C/-80°C. Our default final concentration of glycerol is 50%. Customers could use it as reference.

Shelf Life

The shelf life is related to many factors, storage state, buffer ingredients, storage temperature and the stability of the protein itself. Generally, the shelf life of liquid form is 6 months at -20°C/-80°C. The shelf life of lyophilized form is 12 months at -20°C/-80°C.