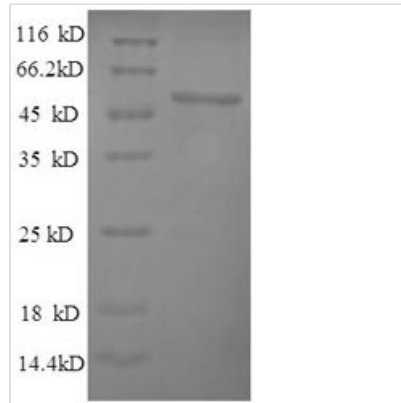




Recombinant *Saccharomyces cerevisiae* Pyruvate carboxylase 1 (PYC1), partial

Product Code	CSB-YP319972SVG
Relevance	Pyruvate carboxylase catalyzes a 2-step reaction, involving the ATP-dependent carboxylation of the covalently attached biotin in the first step and the transfer of the carboxyl group to pyruvate in the second.
Abbreviation	Recombinant <i>Saccharomyces cerevisiae</i> PYC1 protein, partial
Storage	The shelf life is related to many factors, storage state, buffer ingredients, storage temperature and the stability of the protein itself. Generally, the shelf life of liquid form is 6 months at -20°C/-80°C. The shelf life of lyophilized form is 12 months at -20°C/-80°C.
Uniprot No.	P11154
Alias	Pyruvic carboxylase 1 ;PCB 1
Product Type	Recombinant Protein
Immunogen Species	<i>Saccharomyces cerevisiae</i> (strain ATCC 204508 / S288c) (Baker's yeast)
Purity	≥ 90% as determined by SDS-PAGE.
Sequence	EKNKILVANRGEIPIRIFRTAHELSMQTVAIYSHEDRLSTHKQKADEAYVIGEVG QYTPVGAYLAIDEIISIAQKHQVDFIHPGYGFLSENSEFADKVVKAGITWIGPPA EVIDSVGDKVSARNLAAKANVPTVPGTPGPIETVEEALDFVNEYGYPVIIKAAF GGGRGMRVVREGDDVADAFQQRATSEARTAFGNGTCFVERFLDKPKHIEVQLL ADNHGNVVHLFERDCSVQRRHQKVVEVAPAKTLPREVRDAILTDAVKLAKEC GYRNAGTAEFLVDNQNRHYFIEINPRIQVEHTITEEITGIDIVAAQIQIAAGASLPQ LGLFQDKITTRGFQCRITTEDPAKNFQPDGRIEVYRSAGGNGVRLDGGNA YAGTIISPHYDSMLVKCSCSGSTYEIVRRKMIRALIEFRIRGVKTNIPFLLLTLLTNP VFIEGTYWTTFIDDTTPQ
Research Area	Others
Source	Yeast
Target Names	PYC1
Protein Names	Recommended name: Pyruvate carboxylase 1 EC= 6.4.1.1 Alternative name(s): Pyruvic carboxylase 1 Short name= PCB 1
Expression Region	18-470aa
Notes	Repeated freezing and thawing is not recommended. Store working aliquots at 4°C for up to one week.
Tag Info	N-terminal 6xHis-tagged
Mol. Weight	52.0kDa
Protein Length	Partial
Image	



(Tris-Glycine gel) Discontinuous SDS-PAGE (reduced) with 5% enrichment gel and 15% separation gel.

Reconstitution

We recommend that this vial be briefly centrifuged prior to opening to bring the contents to the bottom. Please reconstitute protein in deionized sterile water to a concentration of 0.1-1.0 mg/mL. We recommend to add 5-50% of glycerol (final concentration) and aliquot for long-term storage at -20°C/-80°C. Our default final concentration of glycerol is 50%. Customers could use it as reference.

Shelf Life

The shelf life is related to many factors, storage state, buffer ingredients, storage temperature and the stability of the protein itself. Generally, the shelf life of liquid form is 6 months at -20°C/-80°C. The shelf life of lyophilized form is 12 months at -20°C/-80°C.