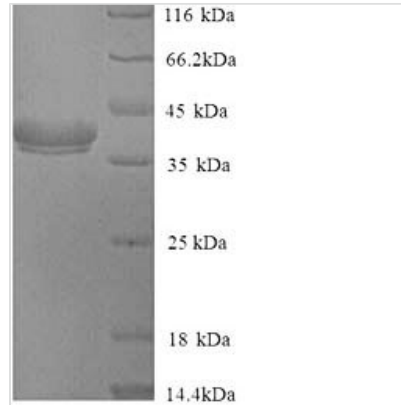




# Recombinant *Cryptomeria japonica* Pectate lyase 1

<b>Product Code</b>	CSB-YP322455DYO
<b>Relevance</b>	Has pectate lyase activity.
<b>Abbreviation</b>	Recombinant <i>Cryptomeria japonica</i> Pectate lyase 1 protein
<b>Storage</b>	The shelf life is related to many factors, storage state, buffer ingredients, storage temperature and the stability of the protein itself. Generally, the shelf life of liquid form is 6 months at -20°C/-80°C. The shelf life of lyophilized form is 12 months at -20°C/-80°C.
<b>Uniprot No.</b>	P18632
<b>Product Type</b>	Recombinant Proteins
<b>Immunogen Species</b>	<i>Cryptomeria japonica</i> (Japanese cedar) ( <i>Cupressus japonica</i> )
<b>Purity</b>	≥ 90% as determined by SDS-PAGE.
<b>Sequence</b>	DNPIDSCWRGDSNWAQNRMKLADCAVGFSGSSTMGGKGGDLYTVTNSDDDP VNPAPGTLRYGATRDRPLWIIFSGNMNIKMKMPMYIAGYKTFDGRGAQVYIGN GGPCVFIKRVSNVIIHGLHLYGCSTSVLGNVLINESFGVEPVHPQDGDALTLRT ATNIWIDHNSFSNSSDGLVDVTLSSSTGVTISNNLFFNHHKVMMLLGHDDAYSDD KSMKVTVAFNQFGPNCGQRMPRARYGLVHVANNNYDPWTIYAIGGSSNPTIL SEGENSFTAPNESYKKQVTIRIGCKTSSSCSNWVWQSTQDVFYNGAYFVSSGK YEGGNIYTKKEAFNVENGNATPQLTKNAGVLTCSLSKRC
<b>Research Area</b>	Others
<b>Source</b>	Yeast
<b>Target Names</b>	N/A
<b>Protein Names</b>	Recommended name: Sugi basic protein Short name= SBP Alternative name(s): Allergen Cry j I Major allergen Cry j 1 Allergen= Cry j 1
<b>Expression Region</b>	22-374aa
<b>Notes</b>	Repeated freezing and thawing is not recommended. Store working aliquots at 4°C for up to one week.
<b>Tag Info</b>	N-terminal 6xHis-tagged
<b>Mol. Weight</b>	40.5kDa
<b>Protein Length</b>	Full Length of Mature Protein
<b>Image</b>	



(Tris-Glycine gel) Discontinuous SDS-PAGE (reduced) with 5% enrichment gel and 15% separation gel.

### Shelf Life

The shelf life is related to many factors, storage state, buffer ingredients, storage temperature and the stability of the protein itself.

Generally, the shelf life of liquid form is 6 months at -20°C/-80°C. The shelf life of lyophilized form is 12 months at -20°C/-80°C.