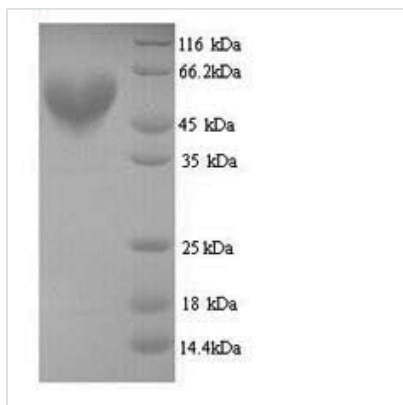


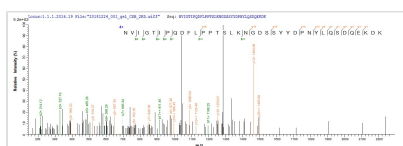


# Recombinant Clostridium butyricum Botulinum neurotoxin type E, partial

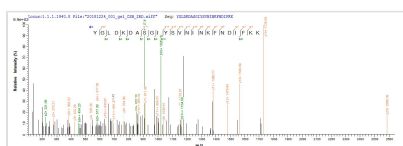
<b>Product Code</b>	CSB-YP327013DUK
<b>Relevance</b>	Botulinum toxin acts by inhibiting neurotransmitter release. It binds to peripheral neuronal synapses, is internalized and moves by retrograde transport up the axon into the spinal cord where it can move between postsynaptic and presynaptic neurons. It inhibits neurotransmitter release by acting as a zinc endopeptidase.
<b>Abbreviation</b>	Recombinant Clostridium butyricum Botulinum neurotoxin type E protein, partial
<b>Storage</b>	The shelf life is related to many factors, storage state, buffer ingredients, storage temperature and the stability of the protein itself. Generally, the shelf life of liquid form is 6 months at -20°C/-80°C. The shelf life of lyophilized form is 12 months at -20°C/-80°C.
<b>Uniprot No.</b>	P30995
<b>Product Type</b>	Recombinant Protein
<b>Immunogen Species</b>	Clostridium butyricum
<b>Purity</b>	≥ 90% as determined by SDS-PAGE.
<b>Sequence</b>	PTINSFNYNDPVNNRTILYIKPGGCQQFYKSFNIMKNIWIIPERNVIGTIPQDFLP PTSLKNGDSSYYDPNYLQSDQEKDKFLKIVTKIFNRINDNLSGRILLEELSKANP YLGNDNTPDGFINDASAVPIQFSNGSQSILLPNVIIMGAEPDLFETNSSNISLR NNYMPSNHGFGSIAIVTFSPEYSFRFKDNSMNEFIQDPALTMHELIHSLHGLY GAKGITTKYTITQKQNPLITNIRGTNIEEFLTFGGTDLNIITSAQSNDIYTLLADY KKIASKLSKVQVSNPLLNPYKDVFEAKYGLDKDASGIYSVNINKFNDIFKKLYSF TEFDLTKFQVKCRQTYIGQYKFKLSNLLNDSIYNISEGYNINNLKVNFRGQN ANLNPRIITPITGRGLVKKIIRFCKNIVSVKGIR
<b>Research Area</b>	Others
<b>Source</b>	Yeast
<b>Protein Names</b>	Recommended name: Botulinum neurotoxin type E Short name= BoNT/E EC= 3.4.24.69 Alternative name(s): Bontoxilysin-ECleaved into the following 2 chains: 1. Botulinum neurotoxin E light chain 2. Botulinum neurotoxin E heavy chain
<b>Expression Region</b>	2-422aa
<b>Notes</b>	Repeated freezing and thawing is not recommended. Store working aliquots at 4°C for up to one week.
<b>Tag Info</b>	N-terminal 6xHis-tagged
<b>Mol. Weight</b>	49.7kDa
<b>Protein Length</b>	Partial
<b>Image</b>	



(Tris-Glycine gel) Discontinuous SDS-PAGE (reduced) with 5% enrichment gel and 15% separation gel.



Based on the SEQUEST from database of Yeast host and target protein, the LC-MS/MS Analysis result of CSB-YP327013DUK could indicate that this peptide derived from Yeast-expressed Clostridium butyricum N/A.



Based on the SEQUEST from database of Yeast host and target protein, the LC-MS/MS Analysis result of CSB-YP327013DUK could indicate that this peptide derived from Yeast-expressed Clostridium butyricum N/A.

**Reconstitution**

We recommend that this vial be briefly centrifuged prior to opening to bring the contents to the bottom. Please reconstitute protein in deionized sterile water to a concentration of 0.1-1.0 mg/mL. We recommend to add 5-50% of glycerol (final concentration) and aliquot for long-term storage at -20°C/-80°C. Our default final concentration of glycerol is 50%. Customers could use it as reference.

**Shelf Life**

The shelf life is related to many factors, storage state, buffer ingredients, storage temperature and the stability of the protein itself. Generally, the shelf life of liquid form is 6 months at -20°C/-80°C. The shelf life of lyophilized form is 12 months at -20°C/-80°C.