

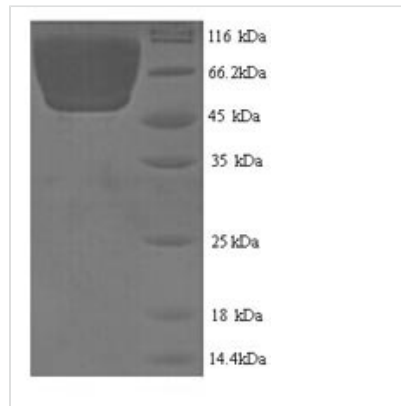


Recombinant Mouse Carboxylesterase 1C (Ces1c), partial

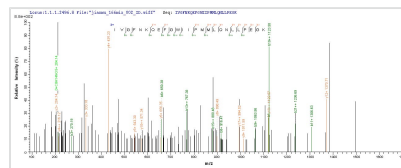
Product Code	CSB-YP338557MO
Relevance	Involved in the detoxification of xenobiotics and in the activation of ester and amide prodrugs. Involved in the Extracellular domain metabolism of lung surfactant.
Abbreviation	Recombinant Mouse Ces1c protein, partial
Storage	The shelf life is related to many factors, storage state, buffer ingredients, storage temperature and the stability of the protein itself. Generally, the shelf life of liquid form is 6 months at -20°C/-80°C. The shelf life of lyophilized form is 12 months at -20°C/-80°C.
Uniprot No.	P23953
Product Type	Recombinant Proteins
Immunogen Species	Mus musculus (Mouse)
Purity	≥ 90% as determined by SDS-PAGE. ≥ 95% as determined by SEC-HPLC.
Sequence	HSELLPPVDDTTQGKVLGKYISLEGFEQPVAVFLGVVFAKPPLGSLRFAPPQPAE PWSFVKNATSYPMMCSDAGWAKILSDMFSTEKEILPLKISEDCLYLNIYSPAD LTKSSQLPVMVWIHGGGLVIGGASPYNGLALSAHENVVVVTIQYRLGIWGLFST GDEHSPGNWAHL DQLAALRWVQDNIANFGGNPDSVTIFGESSGGISVSVLVL SPLGKDLFHRAISESGVVINTNVGKKNIQAVNEIIATLSQCNDTSSAAMVQCLR QKTESELLEISGKLVQYNISLSTMIDGVVLPKAPPEEILAEKSFNTVPYIVGFNKQE FGWIIPMMLQNLPEGKMNEETASLLRRRFHSELNISESMIPAVIEQYLRGVDD PAKKSELILDMFGDIFFGIPAVLLSRSLRDAGVSTYMYEFRYRPSFVSDKRPQT VEGDHGDEIFFVFGAPLLKEGASEEETNLSKMVMKFWANFARNGNPNGEGLP HWPEYDEQEGYLQIGATTQQAQRLKAEVAFWTELLAKNPPETDPTEH
Research Area	Others
Source	Yeast
Target Names	Ces1c
Protein Names	Recommended name: Carboxylesterase 1C EC= 3.1.1.1Alternative name(s): Liver carboxylesterase N Lung surfactant convertase PES-N
Expression Region	19-550aa
Notes	Repeated freezing and thawing is not recommended. Store working aliquots at 4°C for up to one week.
Tag Info	N-terminal 6xHis-tagged
Mol. Weight	60.6kDa
Protein Length	Partial



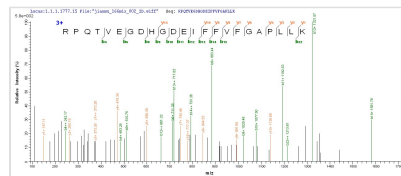
Image



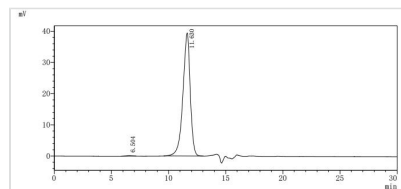
(Tris-Glycine gel) Discontinuous SDS-PAGE (reduced) with 5% enrichment gel and 15% separation gel.



Based on the SEQUEST from database of Yeast host and target protein, the LC-MS/MS Analysis result of CSB-YP33857MO could indicate that this peptide derived from Yeast-expressed Mus musculus (Mouse) Ces1c.



Based on the SEQUEST from database of Yeast host and target protein, the LC-MS/MS Analysis result of CSB-YP33857MO could indicate that this peptide derived from Yeast-expressed Mus musculus (Mouse) Ces1c.



The purity of Ces1c was greater than 95% as determined by SEC-HPLC

Shelf Life

The shelf life is related to many factors, storage state, buffer ingredients, storage temperature and the stability of the protein itself.

Generally, the shelf life of liquid form is 6 months at -20°C/-80°C. The shelf life of lyophilized form is 12 months at -20°C/-80°C.