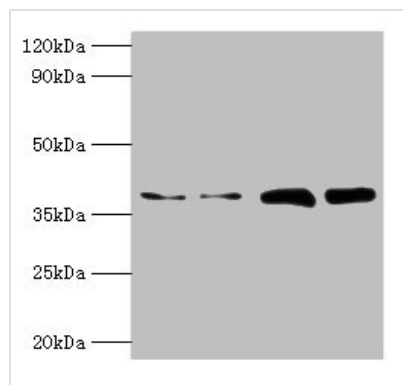




TBCC Antibody

Product Code	CSB-PA023227LA01HU
Storage	Upon receipt, store at -20°C or -80°C. Avoid repeated freeze.
Uniprot No.	Q15814
Immunogen	Recombinant Human Tubulin-specific chaperone C protein (2-346AA)
Raised In	Rabbit
Species Reactivity	Human
Tested Applications	ELISA, WB, IHC; Recommended dilution: WB:1:500-1:5000, IHC:1:20-1:200
Form	Liquid
Conjugate	Non-conjugated
Storage Buffer	Preservative: 0.03% Proclin 300 Constituents: 50% Glycerol, 0.01M PBS, PH 7.4
Purification Method	>95%, Protein G purified
Isotype	IgG
Clonality	Polyclonal
Alias	Tubulin-specific chaperone C (Tubulin-folding cofactor C) (CFC), TBCC
Immunogen Species	Homo sapiens (Human)
Research Area	Signal Transduction
Target Names	TBCC

Image



Western blot

All lanes: TBCC antibody at 2μg/ml

Lane 1: Hela whole cell lysate

Lane 2: HepG2 whole cell lysate

Lane 3: A549 whole cell lysate

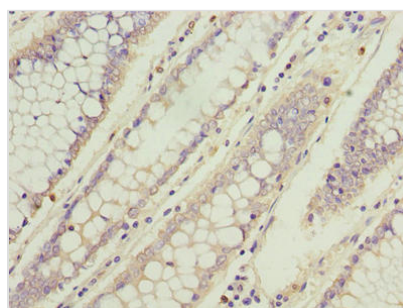
Lane 4: MCF-7 whole cell lysate

Secondary

Goat polyclonal to rabbit IgG at 1/10000 dilution

Predicted band size: 40 kDa

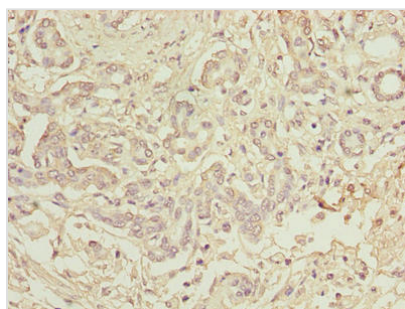
Observed band size: 40 kDa



Immunohistochemistry of paraffin-embedded

human colon cancer using CSB-

PA023227LA01HU at dilution of 1:100



Immunohistochemistry of paraffin-embedded human pancreatic cancer using CSB-PA023227LA01HU at dilution of 1:100