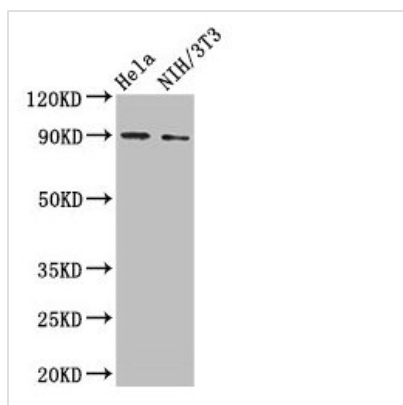




L1CAM Antibody

Product Code	CSB-PA07439A0Rb
Storage	Upon receipt, store at -20°C or -80°C. Avoid repeated freeze.
Uniprot No.	P32004
Immunogen	Recombinant Human Neural cell adhesion molecule L1 protein (995-1119AA)
Raised In	Rabbit
Species Reactivity	Human, Mouse
Tested Applications	ELISA, WB, IHC, IF; Recommended dilution: WB:1:500-1:5000, IHC:1:20-1:200, IF:1:50-1:200
Form	Liquid
Conjugate	Non-conjugated
Storage Buffer	Preservative: 0.03% Proclin 300 Constituents: 50% Glycerol, 0.01M PBS, PH 7.4
Purification Method	>95%, Protein G purified
Isotype	IgG
Clonality	Polyclonal
Alias	Neural cell adhesion molecule L1 (N-CAM-L1) (NCAM-L1) (CD antigen CD171), L1CAM, CAML1 MIC5
Immunogen Species	Homo sapiens (Human)
Research Area	Signal Transduction
Target Names	L1CAM

Image



Western Blot

Positive WB detected in: HeLa whole cell lysate, NIH/3T3 whole cell lysate

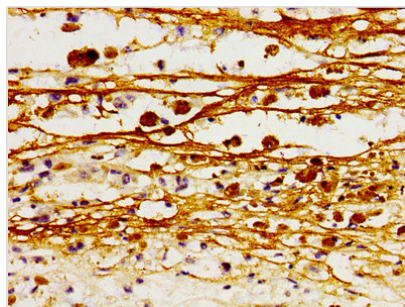
All lanes: L1CAM antibody at 2µg/ml

Secondary

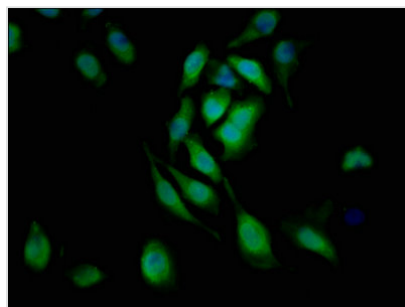
Goat polyclonal to rabbit IgG at 1/50000 dilution

Predicted band size: 141, 140, 139 kDa

Observed band size: 90 kDa



Immunohistochemistry of paraffin-embedded human melanoma using CSB-PA07439A0Rb at dilution of 1:100



Immunofluorescent analysis of A549 cells using CSB-PA07439A0Rb at dilution of 1:100 and Alexa Fluor 488-conjugated AffiniPure Goat Anti-Rabbit IgG(H+L)

Usage

For Research Use Only. Not for use in diagnostic or therapeutic procedures.