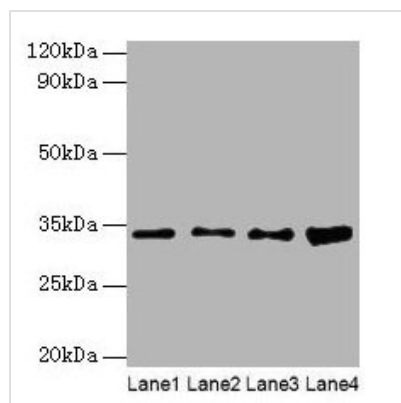




# GTF2E2 Antibody

<b>Product Code</b>	CSB-PA010003LA01HU
<b>Storage</b>	Upon receipt, store at -20°C or -80°C. Avoid repeated freeze.
<b>Uniprot No.</b>	P29084
<b>Immunogen</b>	Recombinant Human Transcription initiation factor IIE subunit beta protein (1-291AA)
<b>Raised In</b>	Rabbit
<b>Species Reactivity</b>	Human, Mouse
<b>Tested Applications</b>	ELISA, WB; Recommended dilution: WB:1:1000-1:5000
<b>Form</b>	Liquid
<b>Conjugate</b>	Non-conjugated
<b>Storage Buffer</b>	Preservative: 0.03% Proclin 300 Constituents: 50% Glycerol, 0.01M PBS, PH 7.4
<b>Purification Method</b>	>95%, Protein G purified
<b>Isotype</b>	IgG
<b>Clonality</b>	Polyclonal
<b>Alias</b>	Transcription initiation factor IIE subunit beta (TFIIE-beta) (General transcription factor IIE subunit 2), GTF2E2, TF2E2
<b>Immunogen Species</b>	Homo sapiens (Human)
<b>Research Area</b>	Epigenetics and Nuclear Signaling
<b>Target Names</b>	GTF2E2

## Image



### Western blot

All lanes: GTF2E2 antibody at 2µg/ml

Lane 1: Mouse brain tissue

Lane 2: Hela whole cell lysate

Lane 3: MCF-7 whole cell lysate

Lane 4: PC-3 whole cell lysate

Secondary

Goat polyclonal to rabbit IgG at 1/10000 dilution

Predicted band size: 34 kDa

Observed band size: 34 kDa

## Usage

For Research Use Only. Not for use in diagnostic or therapeutic procedures.