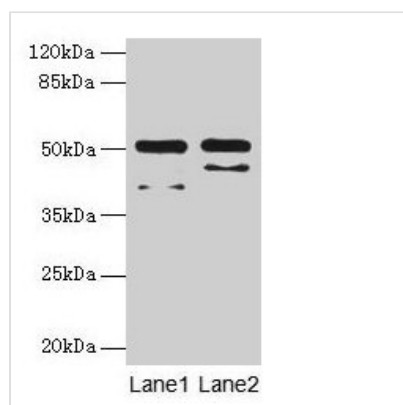




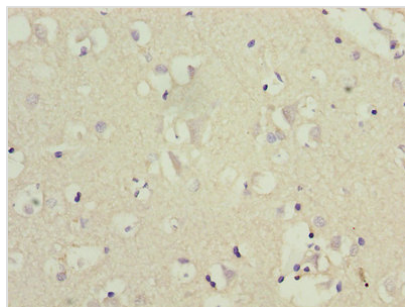
CRHR1 Antibody

Product Code	CSB-PA005965EA01HU
Storage	Upon receipt, store at -20°C or -80°C. Avoid repeated freeze.
Uniprot No.	P34998
Immunogen	Recombinant Human Corticotropin-releasing factor receptor 1 protein (24-121AA)
Raised In	Rabbit
Species Reactivity	Human
Tested Applications	ELISA, WB, IHC, IF; Recommended dilution: WB:1:500-1:5000, IHC:1:20-1:200, IF:1:50-1:200
Form	Liquid
Conjugate	Non-conjugated
Storage Buffer	Preservative: 0.03% Proclin 300 Constituents: 50% Glycerol, 0.01M PBS, PH 7.4
Purification Method	>95%, Protein G purified
Isotype	IgG
Clonality	Polyclonal
Alias	Corticotropin-releasing factor receptor 1 (CRF-R-1) (CRF-R1) (CRFR-1) (Corticotropin-releasing hormone receptor 1) (CRH-R-1) (CRH-R1), CRHR1, CRFR CRFR1 CRHR
Immunogen Species	Homo sapiens (Human)
Research Area	Signal Transduction
Target Names	CRHR1

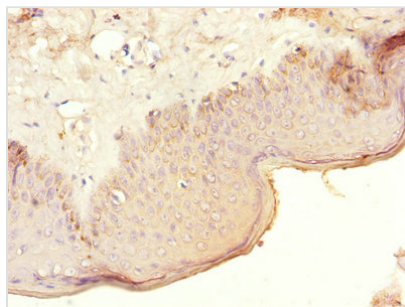
Image



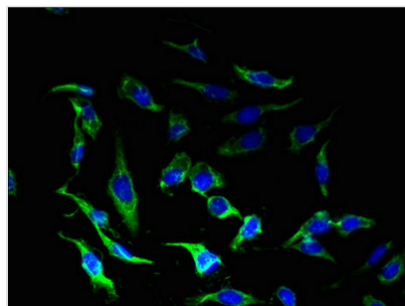
Western blot
All lanes: CRHR1 antibody at 16µg/ml
Lane 1: Hela whole cell lysate
Lane 2: HL60 whole cell lysate
Secondary
Goat polyclonal to rabbit IgG at 1/10000 dilution
Predicted band size: 51, 48, 44, 47, 29 kDa
Observed band size: 51 kDa



Immunohistochemistry of paraffin-embedded human brain tissue using CSB-PA005965EA01HU at dilution of 1:100



Immunohistochemistry of paraffin-embedded human skin tissue using CSB-PA005965EA01HU at dilution of 1:100



Immunofluorescent analysis of Hela cells using CSB-PA005965EA01HU at dilution of 1:100 and Alexa Fluor 488-conjugated AffiniPure Goat Anti-Rabbit IgG(H+L)