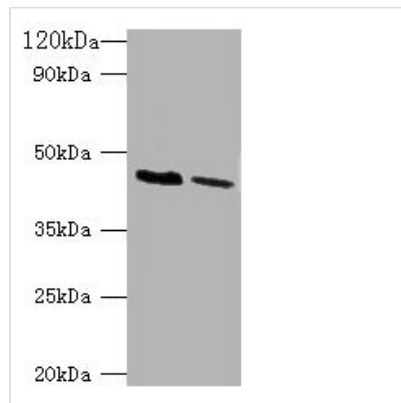




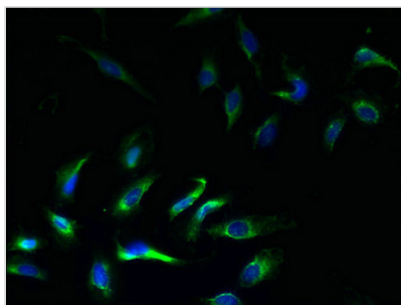
KCNJ1 Antibody

Product Code	CSB-PA012047LA01HU
Storage	Upon receipt, store at -20°C or -80°C. Avoid repeated freeze.
Uniprot No.	P48048
Immunogen	Recombinant Human ATP-sensitive inward rectifier potassium channel 1 protein (178-391AA)
Raised In	Rabbit
Species Reactivity	Human
Tested Applications	ELISA, WB, IF; Recommended dilution: WB:1:1000-1:5000, IF:1:50-1:200
Form	Liquid
Conjugate	Non-conjugated
Storage Buffer	Preservative: 0.03% Proclin 300 Constituents: 50% Glycerol, 0.01M PBS, PH 7.4
Purification Method	>95%, Protein G purified
Isotype	IgG
Clonality	Polyclonal
Alias	ATP-sensitive inward rectifier potassium channel 1 (ATP-regulated potassium channel ROM-K) (Inward rectifier K(+) channel Kir1.1) (Potassium channel, inwardly rectifying subfamily J member 1), KCNJ1, ROMK1
Immunogen Species	Homo sapiens (Human)
Research Area	Signal Transduction
Target Names	KCNJ1

Image



Western blot
All lanes: KCNJ1 antibody at 2µg/ml
Lane 1: HepG2 whole cell lysate
Lane 2: Hela whole cell lysate
Secondary
Goat polyclonal to rabbit IgG at 1/10000 dilution
Predicted band size: 45, 43 kDa
Observed band size: 45 kDa



Immunofluorescent analysis of HeLa cells using CSB-PA012047LA01HU at dilution of 1:100 and Alexa Fluor 488-conjugated AffiniPure Goat Anti-Rabbit IgG(H+L)