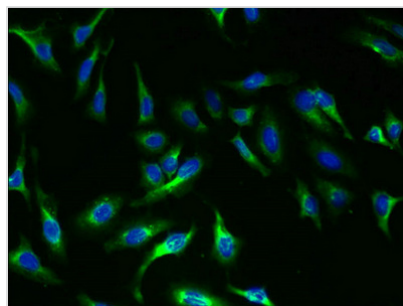




# TSHR Antibody

|                            |   |
|----------------------------|---|
| <b>Product Code</b>        | CSB-PA11189A0Rb   |
| <b>Storage</b>             | Upon receipt, store at -20°C or -80°C. Avoid repeated freeze.                   |
| <b>Uniprot No.</b>         | P16473  |
| <b>Immunogen</b>           | Recombinant Human Thyrotropin receptor protein (21-413AA)                       |
| <b>Raised In</b>           | Rabbit  |
| <b>Species Reactivity</b>  | Human   |
| <b>Tested Applications</b> | ELISA, IF; Recommended dilution: IF:1:50-1:200                                  |
| <b>Form</b>                | Liquid  |
| <b>Conjugate</b>           | Non-conjugated  |
| <b>Storage Buffer</b>      | Preservative: 0.1mol/L NaCl, 15mmol/L NaN <sub>3</sub> , PH7.2                  |
| <b>Purification Method</b> | >95%, Protein G purified  |
| <b>Isotype</b>             | IgG   |
| <b>Clonality</b>           | Polyclonal  |
| <b>Alias</b>               | Thyrotropin receptor (Thyroid-stimulating hormone receptor) (TSH-R), TSHR, LGR3 |
| <b>Immunogen Species</b>   | Homo sapiens (Human)  |
| <b>Research Area</b>       | Signal Transduction   |
| <b>Target Names</b>        | TSHR  |

## Image



Immunofluorescent analysis of HeLa cells using CSB-PA11189A0Rb at dilution of 1:100 and Alexa Fluor 488-conjugated AffiniPure Goat Anti-Rabbit IgG(H+L)