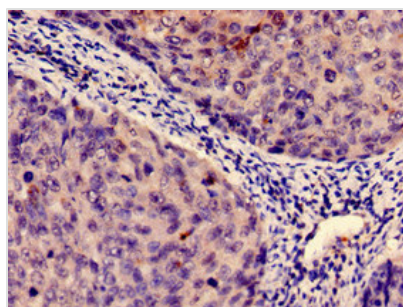




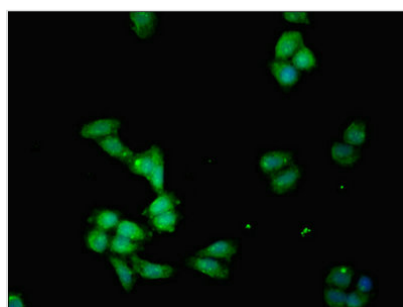
IDO1 Antibody

Product Code	CSB-PA010996HA01HU
Storage	Upon receipt, store at -20°C or -80°C. Avoid repeated freeze.
Uniprot No.	P14902
Immunogen	Recombinant Human Indoleamine 2,3-dioxygenase 1 protein (1-403AA)
Raised In	Rabbit
Species Reactivity	Human
Tested Applications	ELISA, WB, IHC, IF; Recommended dilution: WB:1:500-1:5000, IHC:1:20-1:200, IF:1:50-1:500
Form	Liquid
Conjugate	Non-conjugated
Storage Buffer	Preservative: 0.03% Proclin 300 Constituents: 50% Glycerol, 0.01M PBS, PH 7.4
Purification Method	>95%, Protein G purified
Isotype	IgG
Clonality	Polyclonal
Alias	Indoleamine 2,3-dioxygenase 1 (IDO-1) (EC 1.13.11.52) (Indoleamine-pyrrole 2,3-dioxygenase), IDO1, IDO INDO
Immunogen Species	Homo sapiens (Human)
Research Area	Signal Transduction
Target Names	IDO1

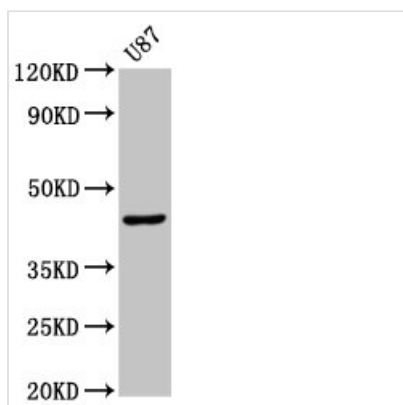
Image



Immunohistochemistry analysis of human cervical cancer using CSB-PA010996HA01HU at dilution of 1:100



Immunofluorescent analysis of HepG2 cells using CSB-PA010996HA01HU at dilution of 1:100 and Alexa Fluor 488-conjugated AffiniPure Goat Anti-Rabbit IgG(H+L)



Western Blot

Positive WB detected in: U87 whole cell lysate

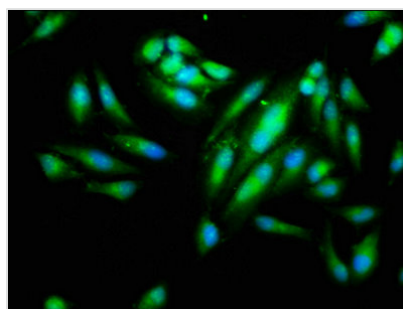
All lanes: IDO1 antibody at 2.6µg/ml

Secondary

Goat polyclonal to rabbit IgG at 1/50000 dilution

Predicted band size: 46 kDa

Observed band size: 46 kDa



Immunofluorescence staining of HeLa cells with CSB-PA010996HA01HU at 1:266, counter-stained with DAPI. The cells were fixed in 4% formaldehyde, permeabilized using 0.2% Triton X-100 and blocked in 10% normal Goat Serum. The cells were then incubated with the antibody overnight at 4°C. The secondary antibody was Alexa Fluor 488-conjugated AffiniPure Goat Anti-Rabbit IgG(H+L).