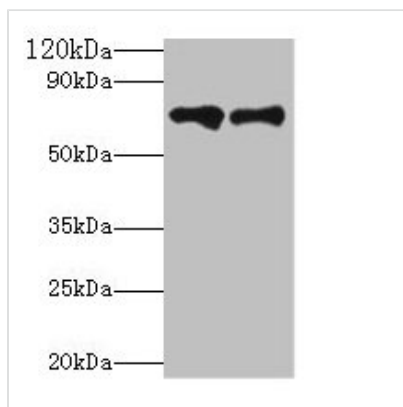




Klkb1 Antibody

Product Code	CSB-PA012461LA01RA
Storage	Upon receipt, store at -20°C or -80°C. Avoid repeated freeze.
Uniprot No.	P14272
Immunogen	Recombinant Rat Plasma kallikrein protein (391-638AA)
Raised In	Rabbit
Species Reactivity	Rat, Human
Tested Applications	ELISA, WB; Recommended dilution: WB:1:1000-1:5000
Form	Liquid
Conjugate	Non-conjugated
Storage Buffer	Preservative: 0.03% Proclin 300 Constituents: 50% Glycerol, 0.01M PBS, PH 7.4
Purification Method	>95%, Protein G purified
Isotype	IgG
Clonality	Polyclonal
Alias	Plasma kallikrein (EC 3.4.21.34) (Fletcher factor) (Kininogenin) (Plasma prekallikrein) [Cleaved into: Plasma kallikrein heavy chain; Plasma kallikrein light chain], Klkb1, Klk3 Pk
Immunogen Species	Rattus norvegicus (Rat)
Research Area	Cardiovascular
Target Names	Klkb1

Image



Western blot
 All lanes: Klkb1 antibody at 2µg/ml
 Lane 1: Hela whole cell lysate
 Lane 2: Rat brain tissue
 Secondary
 Goat polyclonal to rabbit IgG at 1/10000 dilution
 Predicted band size: 72 kDa
 Observed band size: 72 kDa

Usage

For Research Use Only. Not for use in diagnostic or therapeutic procedures.