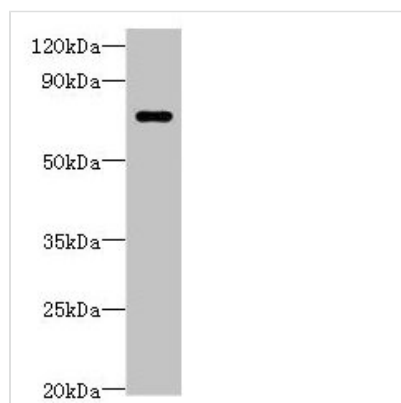




# LRRC40 Antibody

|                            |  |
|----------------------------|--|
| <b>Product Code</b>        | CSB-PA881002LA01HU   |
| <b>Storage</b>             | Upon receipt, store at -20°C or -80°C. Avoid repeated freeze.                    |
| <b>Uniprot No.</b>         | Q9H9A6   |
| <b>Immunogen</b>           | Recombinant Human Leucine-rich repeat-containing protein 40 protein (1-602AA)    |
| <b>Raised In</b>           | Rabbit   |
| <b>Species Reactivity</b>  | Human  |
| <b>Tested Applications</b> | ELISA, WB; Recommended dilution: WB:1:500-1:5000                                 |
| <b>Form</b>                | liquid   |
| <b>Conjugate</b>           | Non-conjugated   |
| <b>Storage Buffer</b>      | Preservative: 0.03% Proclin 300<br>Constituents: 50% Glycerol, 0.01M PBS, PH 7.4 |
| <b>Purification Method</b> | >95%, Protein G purified   |
| <b>Isotype</b>             | IgG  |
| <b>Clonality</b>           | Polyclonal   |
| <b>Alias</b>               | Leucine-rich repeat-containing protein 40, LRRC40                                |
| <b>Immunogen Species</b>   | Homo sapiens (Human)   |
| <b>Research Area</b>       | Cell Biology   |
| <b>Target Names</b>        | LRRC40   |

## Image



Western blot  
 All lanes: LRRC40 antibody at 2µg/ml + 293T whole cell lysate  
 Secondary  
 Goat polyclonal to rabbit IgG at 1/10000 dilution  
 Predicted band size: 69 kDa  
 Observed band size: 69 kDa

## Usage

For Research Use Only. Not for use in diagnostic or therapeutic procedures.