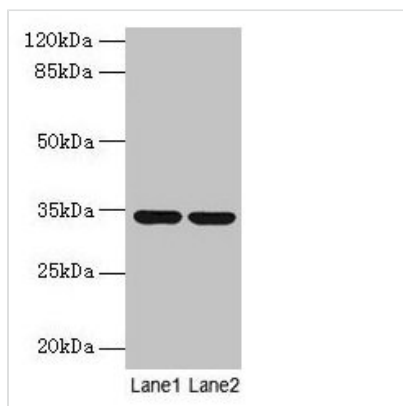




# MRPL19 Antibody

<b>Product Code</b>	CSB-PA014826EA01HU
<b>Storage</b>	Upon receipt, store at -20°C or -80°C. Avoid repeated freeze.
<b>Uniprot No.</b>	P49406
<b>Immunogen</b>	Recombinant Human 39S ribosomal protein L19, mitochondrial protein (1-292AA)
<b>Raised In</b>	Rabbit
<b>Species Reactivity</b>	Human, Mouse
<b>Tested Applications</b>	ELISA, WB, IHC, IF; Recommended dilution: WB:1:500-1:5000, IHC:1:20-1:200, IF:1:50-1:200
<b>Form</b>	Liquid
<b>Conjugate</b>	Non-conjugated
<b>Storage Buffer</b>	Preservative: 0.03% Proclin 300 Constituents: 50% Glycerol, 0.01M PBS, PH 7.4
<b>Purification Method</b>	>95%, Protein G purified
<b>Isotype</b>	IgG
<b>Clonality</b>	Polyclonal
<b>Alias</b>	39S ribosomal protein L19, mitochondrial (L19mt) (MRP-L19) (39S ribosomal protein L15, mitochondrial) (L15mt) (MRP-L15) (Mitochondrial large ribosomal subunit protein bL19m), MRPL19, KIAA0104 MRPL15
<b>Immunogen Species</b>	Homo sapiens (Human)
<b>Research Area</b>	Tags & Cell Markers
<b>Target Names</b>	MRPL19

## Image



### Western blot

All lanes: MRPL19 antibody at 2µg/ml

Lane 1: MCF-7 whole cell lysate

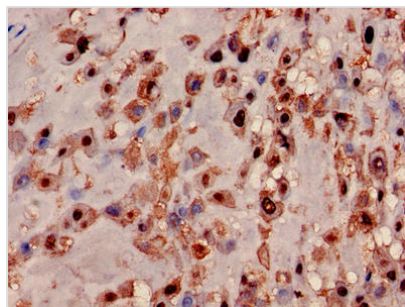
Lane 2: Mouse liver tissue

Secondary

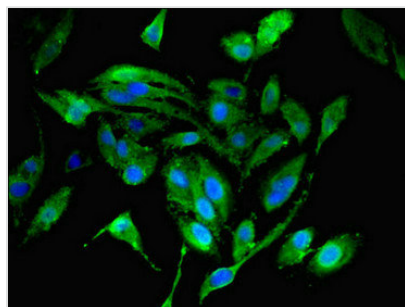
Goat polyclonal to rabbit IgG at 1/10000 dilution

Predicted band size: 34 kDa

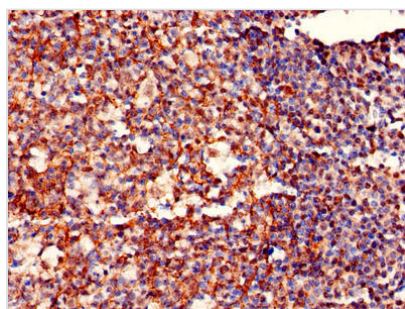
Observed band size: 34 kDa



Immunohistochemistry of paraffin-embedded human placenta tissue using CSB-PA014826EA01HU at dilution of 1:100



Immunofluorescent analysis of HeLa cells using CSB-PA014826EA01HU at dilution of 1:100 and Alexa Fluor 488-conjugated AffiniPure Goat Anti-Rabbit IgG(H+L)



Immunohistochemistry of paraffin-embedded human tonsil tissue using CSB-PA014826EA01HU at dilution of 1:100

**Usage**

For Research Use Only. Not for use in diagnostic or therapeutic procedures.