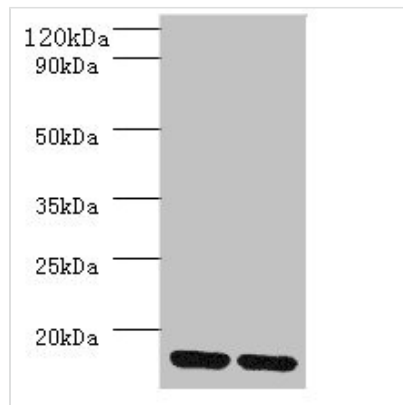




MRPL55 Antibody

Product Code	CSB-PA014872EA01HU
Storage	Upon receipt, store at -20°C or -80°C. Avoid repeated freeze.
Uniprot No.	Q7Z7F7
Immunogen	Recombinant Human 39S ribosomal protein L55, mitochondrial protein (34-128AA)
Raised In	Rabbit
Species Reactivity	Human
Tested Applications	ELISA, WB, IHC; Recommended dilution: WB:1:500-1:5000, IHC:1:20-1:200
Form	Liquid
Conjugate	Non-conjugated
Storage Buffer	Preservative: 0.03% Proclin 300 Constituents: 50% Glycerol, 0.01M PBS, PH 7.4
Purification Method	>95%, Protein G purified
Isotype	IgG
Clonality	Polyclonal
Alias	39S ribosomal protein L55, mitochondrial (L55mt) (MRP-L55) (Mitochondrial large ribosomal subunit protein bL31m) (Mitochondrial large ribosomal subunit protein mL55), MRPL55
Immunogen Species	Homo sapiens (Human)
Research Area	Epigenetics and Nuclear Signaling
Target Names	MRPL55

Image



Western blot

All lanes: MRPL55 antibody at 2µg/ml

Lane 1: K562 whole cell lysate

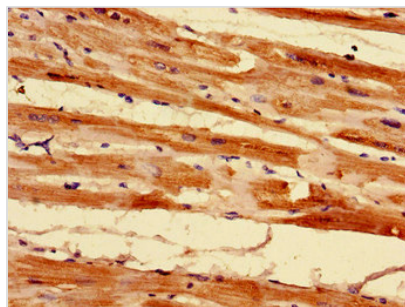
Lane 2: PC-3 whole cell lysate

Secondary

Goat polyclonal to rabbit IgG at 1/10000 dilution

Predicted band size: 16, 19 kDa

Observed band size: 16 kDa



Immunohistochemistry of paraffin-embedded human heart tissue using CSB-PA014872EA01HU at dilution of 1:100

Usage

For Research Use Only. Not for use in diagnostic or therapeutic procedures.