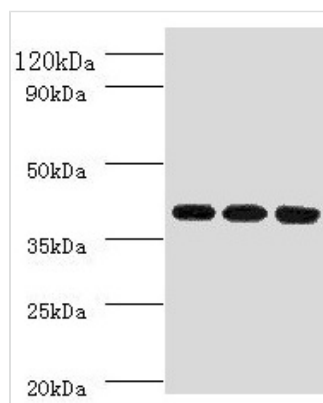




# FCGRT Antibody

<b>Product Code</b>	CSB-PA008545EA01HU
<b>Storage</b>	Upon receipt, store at -20°C or -80°C. Avoid repeated freeze.
<b>Uniprot No.</b>	P55899
<b>Immunogen</b>	Recombinant Human IgG receptor FcRn large subunit p51 protein (24-297AA)
<b>Raised In</b>	Rabbit
<b>Species Reactivity</b>	Human, Mouse
<b>Tested Applications</b>	ELISA, WB, IHC, IF; Recommended dilution: WB:1:500-1:2000, IHC:1:20-1:1000, IF:1:50-1:200
<b>Form</b>	Liquid
<b>Conjugate</b>	Non-conjugated
<b>Storage Buffer</b>	Preservative: 0.03% Proclin 300 Constituents: 50% Glycerol, 0.01M PBS, PH 7.4
<b>Purification Method</b>	>95%, Protein G purified
<b>Isotype</b>	IgG
<b>Clonality</b>	Polyclonal
<b>Product Type</b>	Polyclonal Antibody
<b>Immunogen Species</b>	Homo sapiens (Human)
<b>Research Area</b>	Immunology
<b>Target Names</b>	FCGRT

## Image



### Western blot

All lanes: FCGRT antibody at 1:2000

Lane 1: HepG2 whole cell lysate

Lane 2: Mouse liver tissue

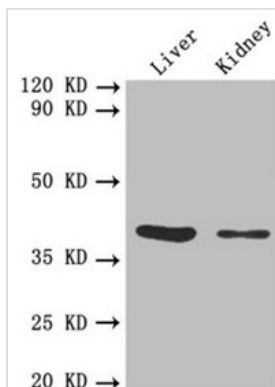
Lane 3: A549 whole cell lysate

### Secondary

Goat polyclonal to rabbit IgG at 1/10000 dilution

Predicted band size: 40 kDa

Observed band size: 40 kDa



#### Western blot

All lanes: FCGRT antibody at 1:1000

Lane 1: Mouse liver tissue

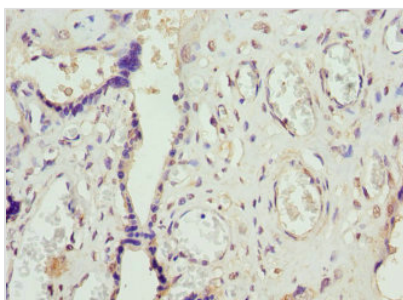
Lane 2: Mouse kidney tissue

#### Secondary

Goat polyclonal to rabbit IgG at 1/10000 dilution

Predicted band size: 40 kDa

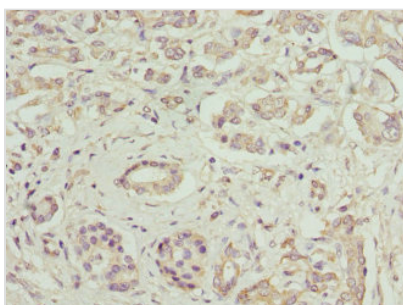
Observed band size: 40 kDa



#### Immunohistochemistry of paraffin-embedded

human placenta tissue using CSB-

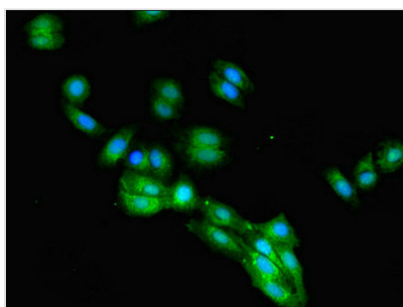
PA008545EA01HU at dilution of 1:100



#### Immunohistochemistry of paraffin-embedded

human pancreatic cancer using CSB-

PA008545EA01HU at dilution of 1:100

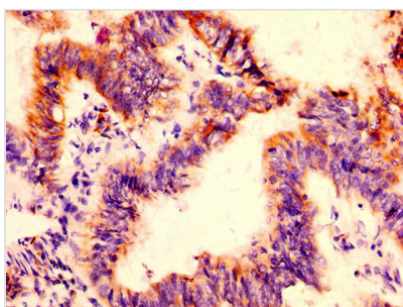


#### Immunofluorescent analysis of HepG2 cells

using CSB-PA008545EA01HU at dilution of

1:100 and Alexa Fluor 488-conjugated

AffiniPure Goat Anti-Rabbit IgG(H+L)



#### IHC image of CSB-PA008545EA01HU diluted at

1:500 and staining in paraffin-embedded human

colon cancer performed on a Leica Bond<sup>TM</sup>

system. After dewaxing and hydration, antigen

retrieval was mediated by high pressure in a

citrate buffer (pH 6.0). Section was blocked with

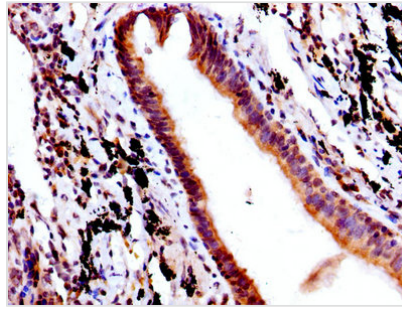
10% normal goat serum 30min at RT. Then

primary antibody (1% BSA) was incubated at

4°C overnight. The primary is detected by a

biotinylated secondary antibody and visualized

using an HRP conjugated SP system.



IHC image of CSB-PA008545EA01HU diluted at 1:500 and staining in paraffin-embedded human lung cancer performed on a Leica Bond<sup>TM</sup> system. After dewaxing and hydration, antigen retrieval was mediated by high pressure in a citrate buffer (pH 6.0). Section was blocked with 10% normal goat serum 30min at RT. Then primary antibody (1% BSA) was incubated at 4°C overnight. The primary is detected by a biotinylated secondary antibody and visualized using an HRP conjugated SP system.