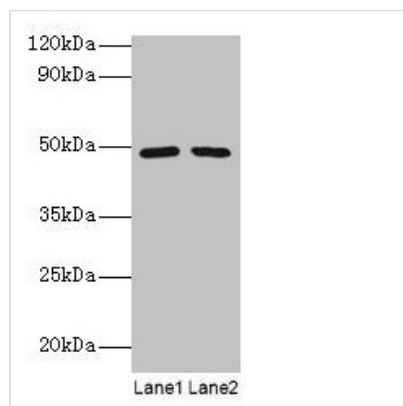




# DDX39B Antibody

<b>Product Code</b>	CSB-PA00304A0Rb
<b>Storage</b>	Upon receipt, store at -20°C or -80°C. Avoid repeated freeze.
<b>Uniprot No.</b>	Q13838
<b>Immunogen</b>	Recombinant Human Spliceosome RNA helicase DDX39B protein (2-251AA)
<b>Raised In</b>	Rabbit
<b>Species Reactivity</b>	Human
<b>Tested Applications</b>	ELISA, WB, IHC, IF; Recommended dilution: WB:1:1000-1:5000, IHC:1:20-1:200, IF:1:50-1:200
<b>Form</b>	Liquid
<b>Conjugate</b>	Non-conjugated
<b>Storage Buffer</b>	Preservative: 0.03% Proclin 300 Constituents: 50% Glycerol, 0.01M PBS, PH 7.4
<b>Purification Method</b>	>95%, Protein G purified
<b>Isotype</b>	IgG
<b>Clonality</b>	Polyclonal
<b>Alias</b>	Spliceosome RNA helicase DDX39B (EC 3.6.4.13) (56 kDa U2AF65-associated protein) (ATP-dependent RNA helicase p47) (DEAD box protein UAP56) (HLA-B-associated transcript 1 protein), DDX39B, BAT1 UAP56
<b>Immunogen Species</b>	Homo sapiens (Human)
<b>Research Area</b>	Epigenetics and Nuclear Signaling
<b>Target Names</b>	DDX39B

## Image



### Western blot

All lanes: DDX39B antibody at 2µg/ml

Lane 1: EC109 whole cell lysate

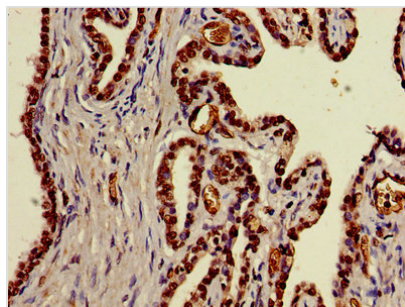
Lane 2: 293T whole cell lysate

Secondary

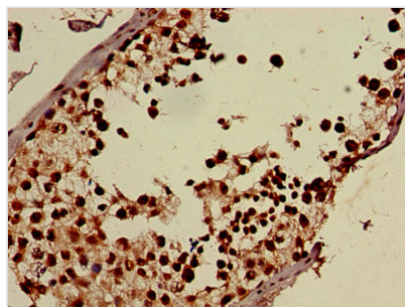
Goat polyclonal to rabbit IgG at 1/15000 dilution

Predicted band size: 49, 51 kDa

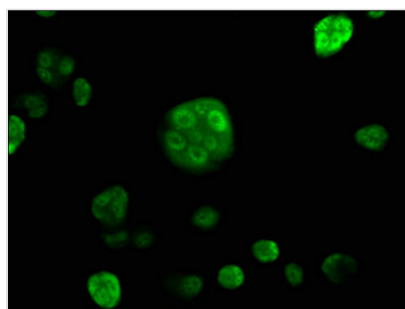
Observed band size: 49 kDa



Immunohistochemistry of paraffin-embedded human prostate cancer using CSB-PA00304A0Rb at dilution of 1:100



Immunohistochemistry of paraffin-embedded human testis tissue using CSB-PA00304A0Rb at dilution of 1:100



Immunofluorescence staining of MCF-7 cells with CSB-PA00304A0Rb at 1:120, counter-stained with DAPI. The cells were fixed in 4% formaldehyde, permeabilized using 0.2% Triton X-100 and blocked in 10% normal Goat Serum. The cells were then incubated with the antibody overnight at 4°C. The secondary antibody was Alexa Fluor 488-conjugated AffiniPure Goat Anti-Rabbit IgG(H+L).