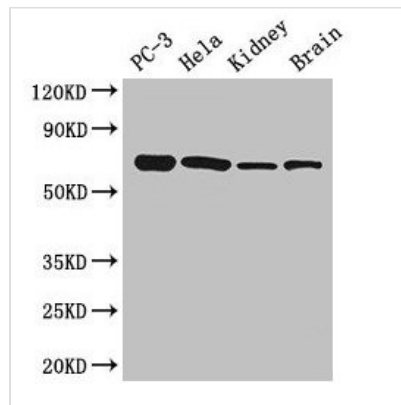




# GPI Antibody

<b>Product Code</b>	CSB-PA00367A0Rb
<b>Storage</b>	Upon receipt, store at -20°C or -80°C. Avoid repeated freeze.
<b>Uniprot No.</b>	P06744
<b>Immunogen</b>	Recombinant Human Glucose-6-phosphate isomerase protein (2-554AA)
<b>Raised In</b>	Rabbit
<b>Species Reactivity</b>	Human, Mouse
<b>Tested Applications</b>	ELISA, WB, IHC, IF, IP; Recommended dilution: WB:1:500-1:5000, IHC:1:20-1:200, IF:1:50-1:200, IP:1:200-1:2000
<b>Form</b>	Liquid
<b>Conjugate</b>	Non-conjugated
<b>Storage Buffer</b>	Preservative: 0.03% Proclin 300 Constituents: 50% Glycerol, 0.01M PBS, PH 7.4
<b>Purification Method</b>	>95%, Protein G purified
<b>Isotype</b>	IgG
<b>Clonality</b>	Polyclonal
<b>Alias</b>	Glucose-6-phosphate isomerase (GPI) (EC 5.3.1.9) (Autocrine motility factor) (AMF) (Neuroleukin) (NLK) (Phosphoglucose isomerase) (PGI) (Phosphohexose isomerase) (PHI) (Sperm antigen 36) (SA-36), GPI
<b>Immunogen Species</b>	Homo sapiens (Human)
<b>Research Area</b>	Neuroscience
<b>Target Names</b>	GPI

## Image



### Western Blot

Positive WB detected in: PC-3 whole cell lysate, HeLa whole cell lysate, Mouse kidney tissue, Mouse brain tissue

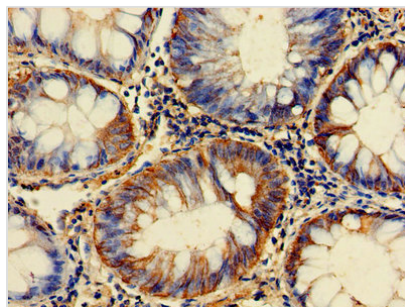
All lanes: GPI antibody at 2.7µg/ml

Secondary

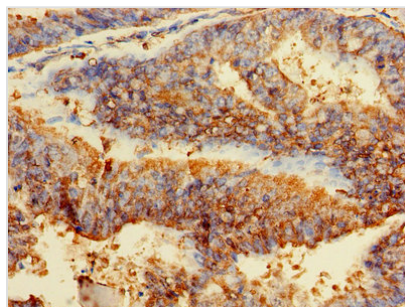
Goat polyclonal to rabbit IgG at 1/50000 dilution

Predicted band size: 64, 65 kDa

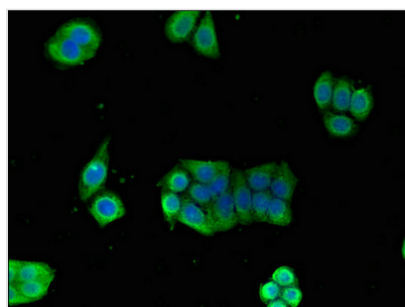
Observed band size: 64 kDa



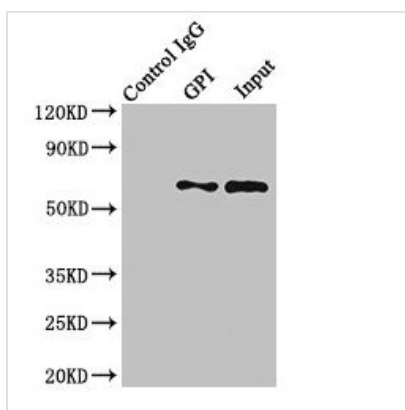
Immunohistochemistry of paraffin-embedded human colon cancer using CSB-PA00367A0Rb at dilution of 1:100



Immunohistochemistry of paraffin-embedded human endometrial cancer using CSB-PA00367A0Rb at dilution of 1:100



Immunofluorescent analysis of PC-3 cells using CSB-PA00367A0Rb at dilution of 1:100 and Alexa Fluor 488-conjugated AffiniPure Goat Anti-Rabbit IgG(H+L)



Immunoprecipitating GPI in HeLa whole cell lysate  
 Lane 1: Rabbit control IgG (1µg) instead of CSB-PA00367A0Rb in HeLa whole cell lysate. For western blotting, a HRP-conjugated Protein G antibody was used as the secondary antibody (1/2000)  
 Lane 2: CSB-PA00367A0Rb (8µg) + HeLa whole cell lysate (500µg)  
 Lane 3: HeLa whole cell lysate (10µg)

**Usage**

For Research Use Only. Not for use in diagnostic or therapeutic procedures.