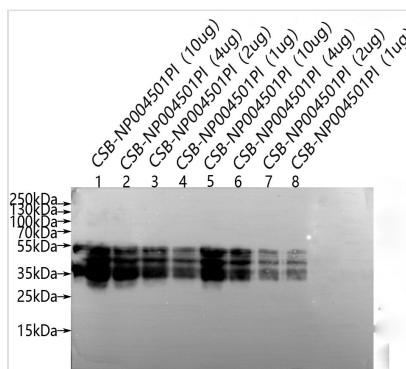




Wheat Gliadin Antibody

Product Code	CSB-PA00450E0Rb
Storage	Upon receipt, store at -20°C or -80°C. Avoid repeated freeze.
Immunogen	Wheat Gliadin (Native Protein)
Raised In	Rabbit
Species Reactivity	Plant
Tested Applications	ELISA, WB; Recommended dilution: WB:1:1000-1:5000
Form	Liquid
Conjugate	Non-conjugated
Storage Buffer	Preservative: 0.03% Proclin 300 Constituents: 50% Glycerol, 0.01M PBS, PH 7.4
Purification Method	>95%, Protein G purified
Isotype	IgG
Clonality	Polyclonal
Product Type	Polyclonal Antibody
Immunogen Species	Plant
Research Area	Others

Image



Western Blot

Positive WB detected in: CSB-NP004501PI(10µg), CSB-NP004501PI(4µg), CSB-NP004501PI(2µg), CSB-NP004501PI(1µg), CSB-NP004501PI(10µg), CSB-NP004501PI(4µg), CSB-NP004501PI(2µg), CSB-NP004501PI(1µg)

All lanes: Wheat Gliadin antibody at 1:1000

Secondary

Goat polyclonal to rabbit IgG at 1/20000 dilution

Predicted band size: 25-55 kDa

Observed band size: 25-55 kDa

Exposure time: 120s

Usage

For Research Use Only. Not for use in diagnostic or therapeutic procedures.